



RPO

Summer 2021: Volume 29, Number 2

The *RPO* is the official publication
of the Gateway Division
of the National Model Railroad Association

Editor: John Carty

Articles, photos and any other materials for publication are to be sent to the Editor. No payment can be made for publication of any materials. Regular issues are published quarterly: Spring, Summer, Fall, and Winter. Subscriptions to the *RPO* are available to members of the NMRA as a service provided by members of the Gateway Division. Send subscription applications and renewals to the Division Treasurer.

Any item may be reproduced by other NMRA publications, unless specifically restricted, as long as author and source credit is included. Advertising of interest to our membership is accepted for publication in the *RPO*. Contact the Editor or Treasurer for current rates and artwork size information. Please send submissions, suggestions, letters, and address corrections to:

Editor, *The RPO*
Gateway Division NMRA
715 W. Cleveland Ave
Belleville, IL 62220

Articles may be submitted as handwritten, typed, plain unformatted text on disk, or plain text via email to johnpcarty@hotmail.com; photo submissions may be made as hi-res digital files, 35mm slides or negatives or as prints.

Submission deadlines:

Spring: April 1
Summer: July 1
Fall: October 1
Winter: January 1

All content is Copyright © 2014 Gateway Division NMRA unless otherwise noted.

Visit our website at

www.gatewaynmra.org

On The Cover

photos by Dave Roeder, MMR

Article detailing construction of Silverton Gladstone & Northerly Caboose #11 starts on page 6.

In This Issue

Director's Reflections.....	2
Under the Wire.....	5
Silverton Gladstone & Northerly Caboose #11	6
Division Meeting Minutes.....	10

Director's Reflections

by David Lowell

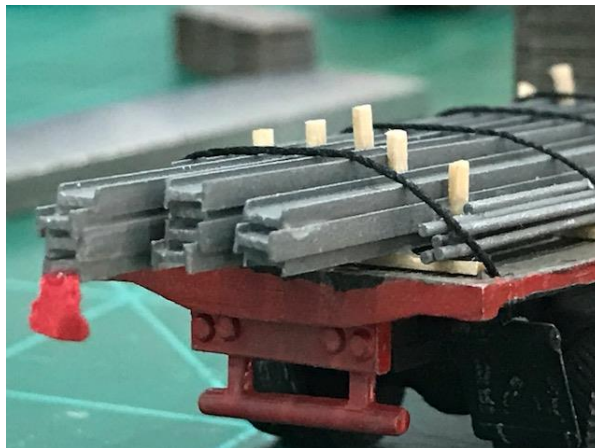
Little things can mean a lot to the big picture. One of the most basic and consistent pieces of advice given in the pages of Model Railroader Magazine over the years has been to start small, with a manageable sized railroad and build your way up to an empire. This avoids the feeling of being overwhelmed or turning the dream into an unattainable nightmare. To build your way up to that empire you need to break it down in to manageable tasks; large, medium and small. I want to



address the small tasks, because believe it or not the little things in the pursuit of the hobby can mean a lot. After all, the Devil is in the details, right?

We are all challenged for time; sure, a lot of you retired guys kid that you have six Saturdays and a Sunday each week. But the reality is many of the retired guys I talk to tell me they are busier now than when they worked, because they are able to engage in things they want to do, not that they have to do. And that is great, frankly I am jealous. After 15 months of COVID isolation that may not be as true, but as life returns toward normalcy this summer and fall those old patterns will hopefully redevelop.

Small projects are a great way to keep active in the hobby. Those of you who get the NMRA Magazine as part of your membership know that Bob Frankrone has had a long running column called "Love Those Loads" where he chronicles flat car loads. All of which are small projects in great detail, with many using left over parts from other projects thus also making them cost effective. Mort Switzer has started a column in the NMRA Magazine of small detail-oriented projects to compliment his previous periodic articles. And Bob Walker recently ended his long running column, "Scratchbuilders Corner", in RMC where over the years he detailed many smaller scene detailing projects. Even John Allen's famous Gorre and



Daphetid, which was truly ahead of its time, was comprised of many small details, with the sum of the parts creating the grandeur.

During COVID I have been fortunate enough to receive semi regular e-mail updates from Mark Svendsen, who now lives in Florida, but has model railroading ties back to St. Louis from his days operating on the Webster Groves & Fenton. Mark is building an empire, part of which is a steel mill. Recently he has been sending updates on the detailed components that he calls time killers and treats as individual detail projects. Some of many examples Mark has sent are:

Simple boxes and crates made from styrene shapes, tubes and C channels.

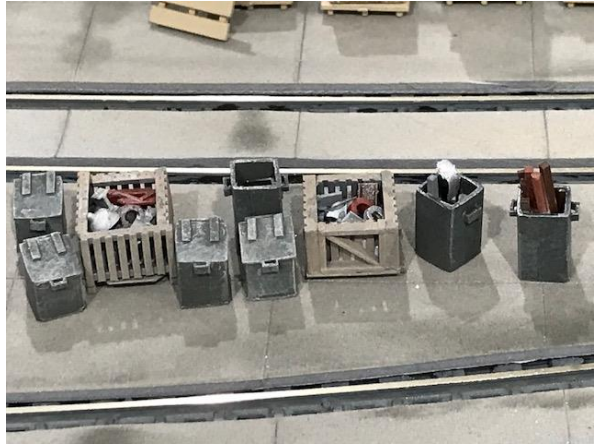
Detailed loads for trucks.

And I have undertaken some smaller projects lately that have been on the to-do list for a while. As simple as repainting two ready to run SD-9s for the C&M in their November 1955 as delivered lighting stripe livery. Many times these details complete the scenes they are in, making it more realistic and less sterile.

Sometimes thinking big means to think small and come up with some simple projects that you can bang out relatively quickly. You will be surprised how satisfying they can be and how you still get a great sense of accomplishment from them when they are done. Also they can be a great way to try a new technique or hone a skill.

In the spirit of this column's topic, I'm keeping it short for a change.

I will always be available, as well as the great team of officers we have, to



receive any comments or suggestions you may have. You can reach me at LowellCoMotive@gmail.com

Happy Rails
David C. Lowell
Director,
Gateway Division, Mid Continent
Region
Nation Model Railroad Association

Under the Wire

by John Carty, Editor

Somehow, I have almost caught up on the RPO. I hope to have the Fall Issue out before Christmas. Wish me luck.

Obviously, this year has been a challenge. Normally I manage to accomplish things in little bites squeezed in here and there. This has not happened of late.

Given the dearth of submissions over the last year or so, I suspect I am not alone in the quandary. One would expect a flurry of activity in the model world during the lockdowns and closures precipitated by the pandemic, but the reverse seems to be the case.

I know that in my case taking care of family consumed more time than ever. One definite result of so-called “remote learning” saw kids bouncing off of the walls due to over exposure to electronic devices. We are constantly warned about permitting too much screen time for children, and then the school day consists of five or six hours staring at a computer screen. Homework would then consist of more time on the computer. Afterwards, the kids were climbing the walls. I guess the educational experts cared little about such a situation when they did not have to deal with the fall out.

We did try to have projects for the kids (including modeling), but their attention span and patience were shredded by the excessive amounts of time spent staring at the computer. Hopefully we can do better over the next year.

I need more material for the RPO. Thanks to Dave Roeder, David Lowell, and Venita Lake for their articles, as well as photos from Richard Schumacher. They have filled the pages over the last year and a half.

I appreciate their work, but I know that many others have interests and foci which I invite them to share with the division. The Gateway Division boasts an impressive variety of talents, which I sincerely wish to showcase in this publication. Over the past eleven years, I have barely scratched the surface. Many times, it seems that the same people submit material. I appreciate their work and hope they continue to do so, but I would also like to see what others have on their plates.

I enjoy seeing places to visit, learning new techniques, discovering previously unknown prototypes, finding hidden gems, activities with which to share with children, and a host of other possibilities. Now I just need people to step up and inform me of them, so I can share the largess with the membership.

Believe me when I say that I know that life is busy. The challenge, therefore, is to push past what is pressing and get to what is important and share that with our families and then with our extended railroading family.

Time to hop off of the soapbox and back to reality.

John Carty
Editor

Hon3 Silverton Gladstone & Northerly #11

by Dave Roeder, MMR

One of my more enjoyable hobby pastimes is going to model railroad vendor meets where I search for old unbuilt wood craftsman kits. For some reason caboose kits are the most common. Some are true wood kits while others are part white metal castings with wood bodies. I build these up as contest models because they do not fit the era of my HO scale Webster Groves & Fenton railroad. While most are HO scale, I recently found one from Quality Craft Models, a HOn3 scale East Broad Top model. This was a real find that would fit on my HOn3 Silverton Gladstone & Northerly railroad.

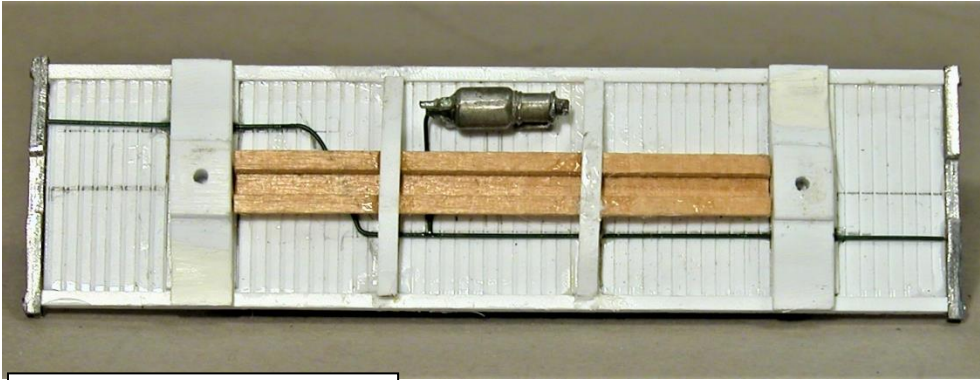
Typical craftsman kits from the 1960's included some white metal parts. This kit contained eight windows, two doors, four cupola walls, four steps, a type K brake cylinder, two brake hand wheels and a stove pipe. Two lengths of wire and a strip of brass

Kit parts from the box and HOn3 couplers and trucks



caboose end ladder were furnished. I made all of them rest of the model from scratch. The only wood piece I used was the center frame beam because it was a milled shape and would not be seen under the model.

The NMRA rules for scratch-built items require most components of the model except trucks and couplers, to be scratch built. This kit contained a number of white metal parts that are

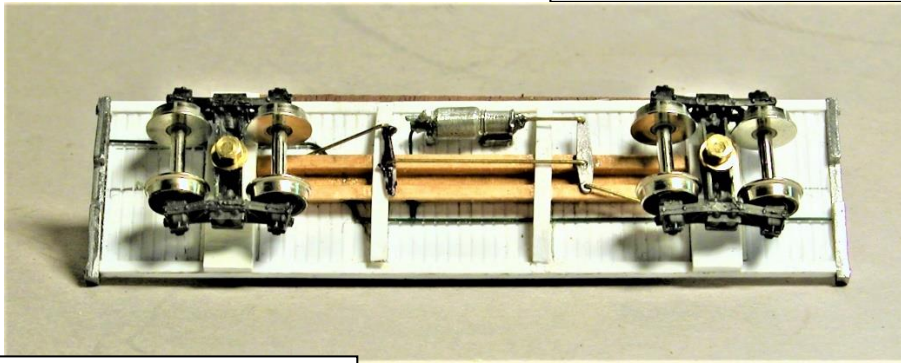


Chassis with main air brake lines and type K brake cylinder

not allowed in the scratch-built class, so I decided to build it as a kit bashed model. I began by fabricating the entire chassis (except for the center beam), body, caboose roof and cupola roof from styrene. Roof walks and cupola shades were also made from styrene.



Scratch built bolsters from .250" square styrene



Chassis subassembly less couplers

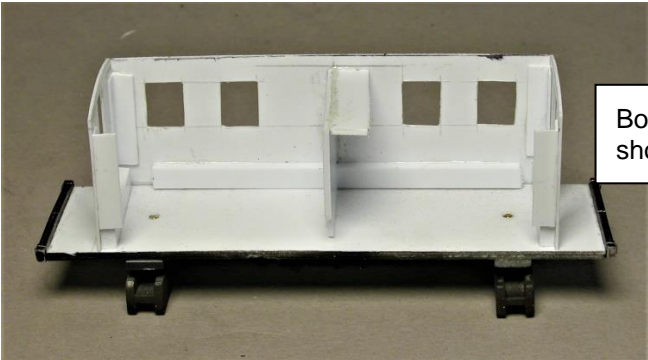
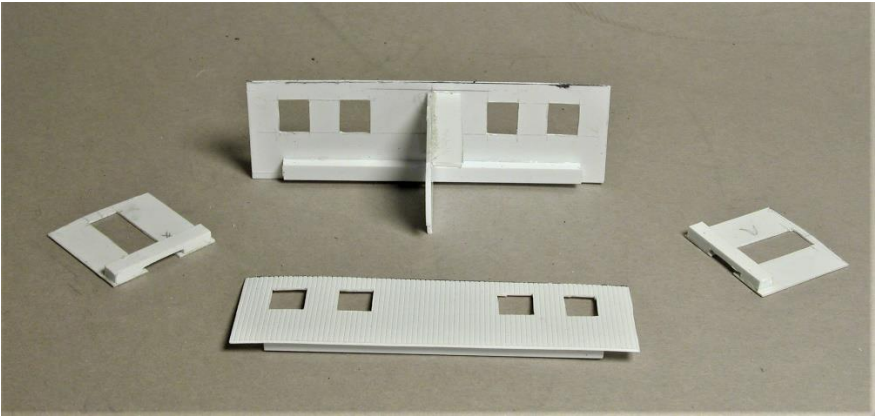
Added white metal details from the kit were two end beams, two brake hand wheels, four caboose steps, a type K air brake cylinder and a smoke jack. I added scratch-built details which included four end wall grabs, four side curved grabs and four end beam

grabs, two end railings, two brake wheel assemblies, one main air brake line, two truck brake rods, one brake center rod and two brake levers. The brake hoses are made from rubber and are flexible, so they do not break when handled. The windows are Micro Scale Micro Krystal Klear and one is frosted for the bathroom.

Body walls showing interior bracing detail

The total number of scratch-built parts was 65. The total number of details added was 38.

I added 1.75 oz. lead weights to bring the car up to NMRA standards and installed Kadee HO_n3 Couplers and



Basic subassemblies: roof, body, chassis with 1.75 Oz. weight

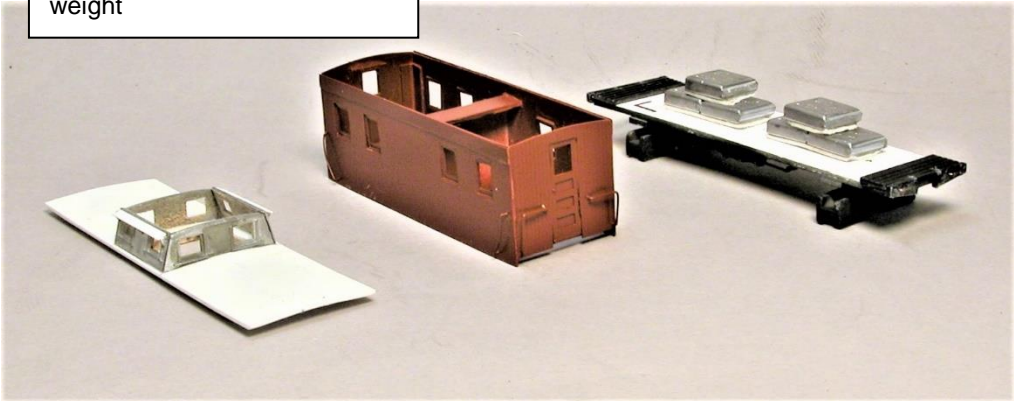
HO_n3 Trucks.

I primed the finished model

Body partial assembled to show interior bracing detail

with Tamiya rattle can primer, then airbrushed the Floquil Acrylic C&NW Yellow. The roof cab shades and cupola roof are Tamiya rubber black. The chassis is Tamiya rubber black with a weathering powder mix I use for this

with Tamiya rattle can primer, then airbrushed the Floquil Acrylic C&NW Yellow. The roof cab shades and cupola roof are Tamiya rubber black. The chassis is Tamiya rubber black with a weathering powder mix I use for this



purpose. I added this to the end platforms as well. I made the decals on my computer.

I now have a nice caboose to run behind my steam era narrow gauge railroad.

Caboose test fit body to chassis



Bottom view of completed chassis - # 2-56 screws and washers to attach trucks



Division Minutes

by Thomas Ose

Meeting Minutes for March 15, 2021

Superintendent: Willie Richter

Assistant Superintendent: Dan Knipp

Paymaster: Bill Levine

Clerk: Thomas Ose

McoR Director: David Lowell

Activity Coordinator: Ron Gawedzinski

Publicity Chairman: Jim Ables

Membership Chairman: Bill Linson

AP Chairman: John Carty

Contest Chairman: Chris Oestreich

Business Meeting:

At 7:01pm superintendent Willie Richter called the Zoom meeting to order. Reminder was given that meeting may be recorded. Also mentioned to state name when speaking.

Membership Chair Report

Dave Lowell indicated that there was no monthly membership report.

Minutes

Previous months minutes were approved.

Financial

Report was approved and attached is latest report. Jim Ables followed up on the real good deal he made on a new laptop.

Old Business

No old Business

New Business

Resuming in person meeting

general consensus was that we are still to early to resume in person meetings

meeting places may not allow large gatherings

Zoom meetings appear to be a hit

25-30 average attendees

positive feed back for those that live further away and are not able to attend meetings

need to make sure we continue with Zoom meetings even when we are in person again

Planning for fall meet

to early to make a definitive decision

should start planning as if it will happen

check with church on availability

RPM will go on as scheduled

Fall Boeing may be canceled

Board members will review at next board meeting

General Announcements

2021 Tulsa Union joint convention moved to Oct 6-10

National Rails by the Bay convention canceled

2022 National Convention in St Louis September 7 – 15

2020 Convention cars still delayed

Clinic:

Pete Weiglin - Cincinnati Division of the Mid Central region

The Pullman Company - a look at its history, mythology, and the evolution of its standard practices and equipment. And, the real secret of Pullman's success operating the largest rolling hotel chain in America.

April Zoom meeting Clinic/Presentation

Edward Swain - Cincinnati Division of the Mid-Central Region

Ed will describe how he built a model of the Pennsylvania Railroad Lift bridge in Louisville from photographs and how he installed the bridge on his layout.

Still looking for presenters over Zoom.
Contact Dan Knipp.

Respectfully Submitted,
Thomas Ose

Clerk, Gateway Division

Meeting Minutes for May 17, 2021

Superintendent: Willie Richter

Assistant Superintendent: Dan Knipp

Paymaster: Bill Levine

Clerk: Thomas Ose

McoR Director: David Lowell

Activity Coordinator: Ron Gawedzinski

Publicity Chairman: Jim Ables

Membership Chairman: Bill Linson

AP Chairman: John Carty

Contest Chairman: Chris Oestreich

Business Meeting:

At 7:04pm superintendent Willie Richter called

the Zoom meeting to order. Reminder was given that meeting may be recorded. Also mentioned to state name when speaking.

Membership Chair Report

Dave Lowell presented the monthly membership report which is attached. We were joined by two guests.

Minutes

Previous months minutes were approved. Tom Johnson motioned and Dan Knipp seconded.

Financial

Report was approved and attached is latest report. David Lowell motioned and Jim Ables seconded.

Old Business

Jim Ables is working on getting the regulations out to everyone.

New Business

Ongoing Zoom Meeting once we are live again

Jim is getting equipment costs together and estimates around a \$1500.00 expenditure.

Still need to investigate connection options for the two locations.

General Announcements

2021 Tulsa Union joint convention October 6-10 2021 Rails by The Bay **online** July 6-10 (Volunteers?)

STL RPM meet on July 30 & 31, 2021 in Collinsville

Want to volunteer at RPM, get in free? (jkkuebler@yahoo.com)

After the Clinic there was continued discussion as to when we will go live again. This will be discussed at the next board meeting.

Clinic:

David Ackmann

Creating Custom Decals

Dave will demonstrate a wide range of applications where they can be integrated into existing scenery, 3D printing and electronics. It's easy and fun; and only needs access to an ink jet printer to make your layout recognizable with signage from past and present.

June Clinic

Pete Weiglin - Cincinnati Division 7 of the Mid Central region

Railway Mail Service and RPO Cars

Learn more about this very important service that was once the primary means of keeping people connected.

Still looking for presenters over Zoom.

Contact Dan Knipp.

Respectfully Submitted,

Thomas Ose

Clerk, Gateway Division

NMRA MCoR Region & Gateway Division

The National Model Railroad Association (NMRA) is a world-wide organization dedicated to all aspects of model railroading. In order to bring the most benefit to its members, the association is subdivided into Regions, and each Region has a number of local Divisions. National dues are \$72 per year, and all members of the NMRA are automatically members of the Region and Division in which they live. The Gateway Division is part of the Mid-Continent Region, which represents Missouri, Kansas, Arkansas, Oklahoma, Nebraska, and parts of Iowa and Illinois.

The Mid-Continent Region publishes a quarterly bulletin, *The Caboose Kibitzer*, and holds an annual convention meeting that usually includes modeling clinics, local tours of layouts or prototype facilities, and model contests. Annual subscription to the Mid-Continent Region *Caboose Kibitzer* is included with membership at the National level and runs concurrently.

The Gateway Division is well represented on the regional and national levels of the NMRA. Its members actively promote the modeling hobby through local monthly meetings, this quarterly newsletter, an

annual train meet in the fall, participation in area train shows and other events, and a comprehensive website. Annual subscription to the Gateway Division *RPO* is \$10, running from July 1 through June 30. Members who subscribe mid-year are given extended memberships. The division's official mailing address is on the "Contact Us" page on the website: <http://www.gatewaynmra.org/gateway-nmra-contact-us/>. Checks may be sent to Gateway Division NMRA, PO Box 7742, Chesterfield, Missouri 63006-7742. Membership is open to anyone from the beginner to the most advanced modeler, of all ages, so that everyone can share questions and knowledge of the hobby. Visitors are welcome at the monthly Division meetings listed on our website, www.gatewaynmra.org

Division Officers

Superintendent

Willie Richter

Assistant Superintendent

Dan Knipp

Clerk (Secretary)

Tom Ose

Paymaster (Treasurer)

Bill Levine

Division Director

David Lowell



GATEWAY **NMRA**
ST. LOUIS **MCoR**