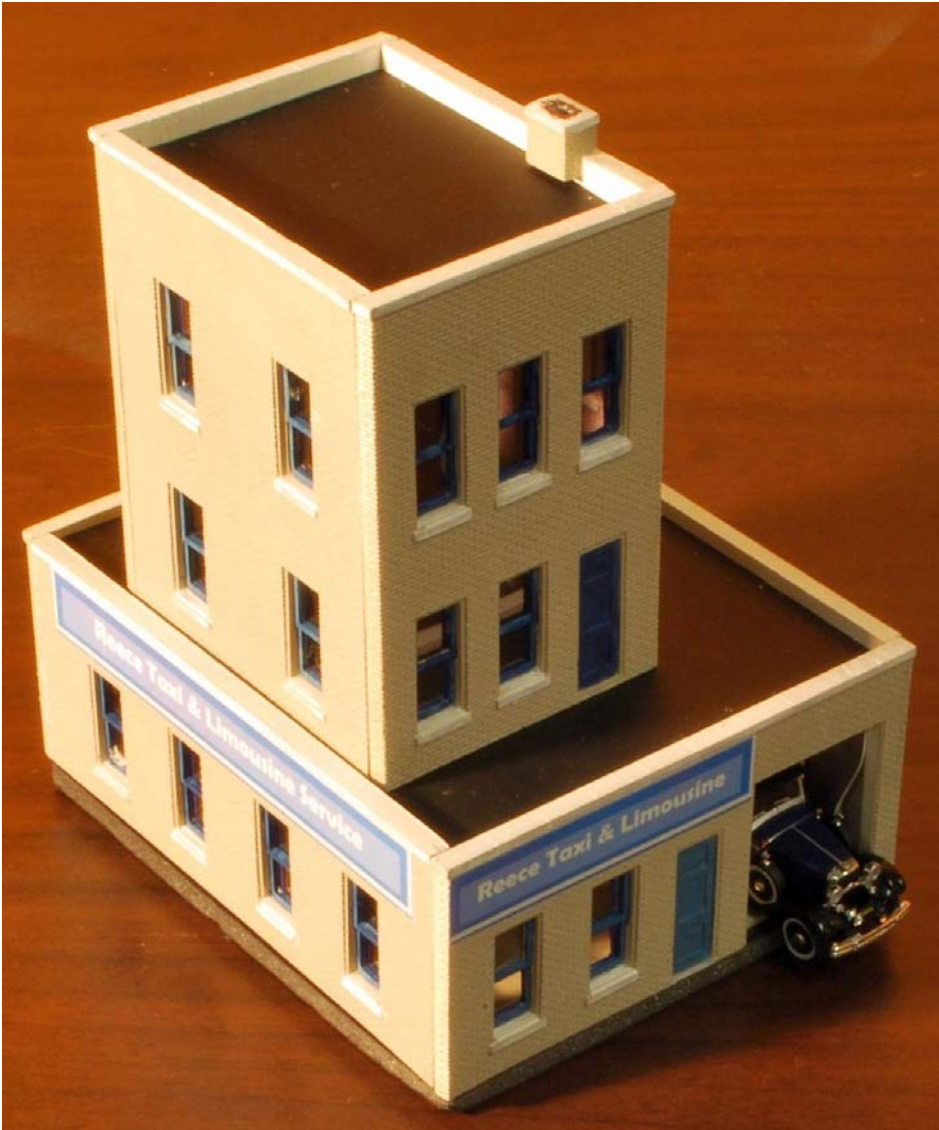


RPO

Volume 20, Number 3
Fall 2012
www.gatewaymra.org



RPO

Fall 2012: Volume 20, Number 3

The *RPO* is the official publication
of the Gateway Division
of the National Model Railroad Association

Editor: John Carty

Cover photo: Phil Bonzon

Articles, photos and any other materials for publication are to be sent to the Editor. No payment can be made for publication of any materials. Regular issues are published quarterly: Spring, Summer, Fall, and Winter. Subscriptions to the *RPO* are available to members of the NMRA as a service provided by members of the Gateway Division. Send subscription applications and renewals to the Division Treasurer.

Any item may be reproduced by other NMRA publications, unless specifically restricted, as long as author and source credit is included. Advertising of interest to our membership is accepted for publication in the *RPO*. Contact the Editor or Treasurer for current rates and artwork size information. Please send submissions, suggestions, letters, and address corrections to:

Editor, *The RPO*
Gateway Division NMRA
715 W. Cleveland Ave.
Belleville, IL 62220

Articles may be submitted as handwritten, typed, plain unformatted text on disk, or plain text via email to johnpcarty@hotmail.com; photo submissions may be made as hi-res digital files, 35mm slides or negatives or as prints.

All content is Copyright © 2012 Gateway Division NMRA unless otherwise noted.

Visit our website at
www.gatewaynmra.org

Cover Photo

Venita Lake's entry in the Annual Kit Bashing Contest. See page 4 for the results of the contest.

Photo by Phil Bonzon

In This Issue

| | |
|---|----|
| Superintendent's Desk | 2 |
| Under the Wire..... | 3 |
| Results From the Gateway Division Annual Kit Bashing Contest..... | 4 |
| Kitbashing a DPM Contest Winner. | 9 |
| Gateway Division Report For June 2, 2012 MCoR BOD Meeting..... | 12 |
| A Computer Based Dispatcher's Panel..... | 14 |
| 5 th Annual Gateway Div./NRHS Picnic | 17 |
| Regulations of the Gateway Division of the NMRA | 18 |
| Timetable of Events | 22 |
| Division Meeting Minutes..... | 22 |

Superintendent's Desk

by Hank Kraichely

Well fall is here and we now shift our modeling and railroading into high gear. Why not put some of your plans into action? I know I have put scenery off for much too long, so that is own my agenda to begin. Join me in completing that project that has been hanging around for so long?

I would like to take this opportunity to thank Ron Gawedzinski for doing such a great job heading up our joint picnic with the NRHS! We had approximately 100 people there and everyone had a

good time and lots to eat. Plan to attend the picnic next year.

The next thing now our calendar is the Holiday party. The party will be held at Trinity on November 19th. There will be attendance prizes for both the women as well as the men. We will also have an excellent presentation by Bill Linson on his travels out West. Bill is a great photographer so you can expect to see both scenery as well as prototype shots. Bring a dish and join the fun.

Due to a scheduling problem, the Fall Meet has been canceled for 2012. A date has been set up with the Church (November 2, 2013). Please pass the word to your friends so we don't have someone show up at the Church.

Finally, I would like to thank my fellow officers who have been serving with me for four years. I also would like to thank the team that helped make the Regional Convention such a success! It is impossible to put on these events without a large group of members helping out, say yes the next time we call for help on a project you will enjoy it! I have enjoyed being your Superintendent and hope to continue serving you as the Division Director.

Hank

Under the Wire

by John Carty

School has started, and with it dance. Some nights I feel more like a cabby or bus driver than anything else. The good news is that modeling season is upon us.

The summer kit bashing contest provided me with a great opportunity to complete a structure I needed for

my layout during a time of year when modeling activities tend to be limited. I also provided me with a break from more demanding scratch building projects, which I now have to knuckle down and complete.

Each year I set modeling goals which look great in the fall, but by spring I have fallen in my attempt to achieve them. On the flip side, however, something gets done, just not the quantity I sought to achieve. Of greater importance in the long run, however, I seek to share the hobby with my children. In these efforts I get to spend time with them individually and corporately.

My high school aged son has shown an interest in building a Mars-themed layout. His interest was piqued by the game *Martian Rails*. This is truly one of those opportunities requiring a great deal of imagineering. It also means a chance to create a free lanced layout that can only be described as way out there with my son, making this a real win-win situation.

Having a house full of kids, even with three in college, restricts the opportunities to attend meetings and socialize with other members of the division, so the cancelling of the Fall Meet removes one such opportunity this year. One of these years, I will be able to attend the picnic, with my entourage.

As a special treat, we have an article from Australia in this issue courtesy of Kel Sherson via Phil Bonzon. Thank you, Phil!

John

P.S. Brian Post has graciously offered to provide answers to your Digital Command Control (DCC) questions.

This column will debut in the next issue. Please send your questions to

me at the address listed on page 2.

Results From the Gateway Division Annual Kit Bashing Contest

by Phil Bonson

The DPM models of the Gateway's annual kit bashing contest were judged by popular vote at the September 17 meeting. The kits, along with a selection of extra parts, were distributed at the Gateway's May 2012 meeting. Entrees were divided into two categories, Craftsman (previous winners) and Novice with awards for both categories. This is to encourage members to build and enter the contest. Ten models were entered with the following results:

Novice: Don Ayres, John Carty, Ray Jones, Hank Kraichely, Ron Kraus, Dave Lyon and Larry Wodell

1st Place: John Carty \$50 gift card to Mark Twain Hobby Center

2nd Place: Ray Jones \$25 gift card to Mark Twain Hobby Center

Craftsman: Phil Bonzon, Venita Lake and Gregor Moe

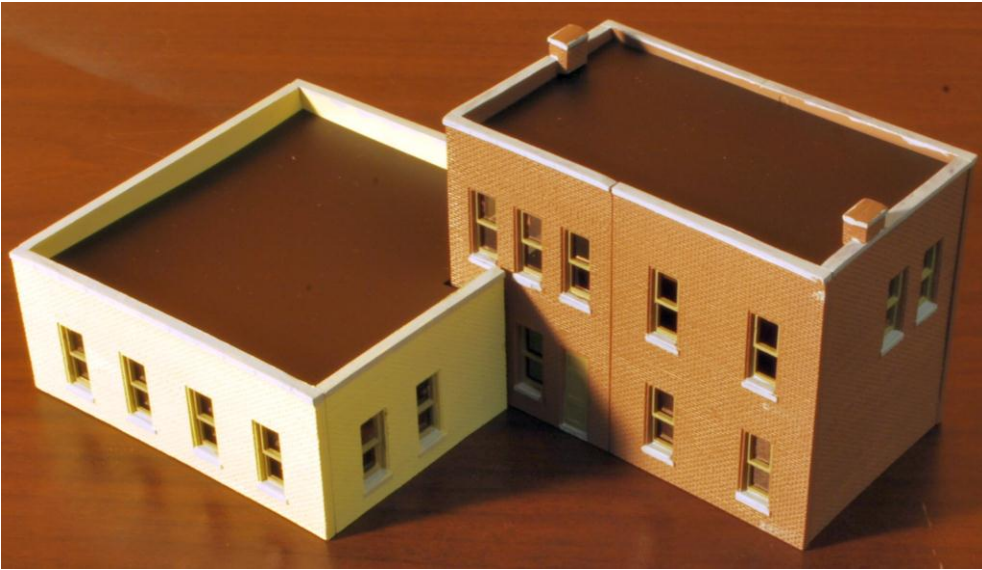
1st place: Phil Bonzon MMR \$50 gift card to Mark Twain Hobby Center

2nd Place: Gregor Moe \$25 gift card to Mark Twain Hobby Center

Novice Entries

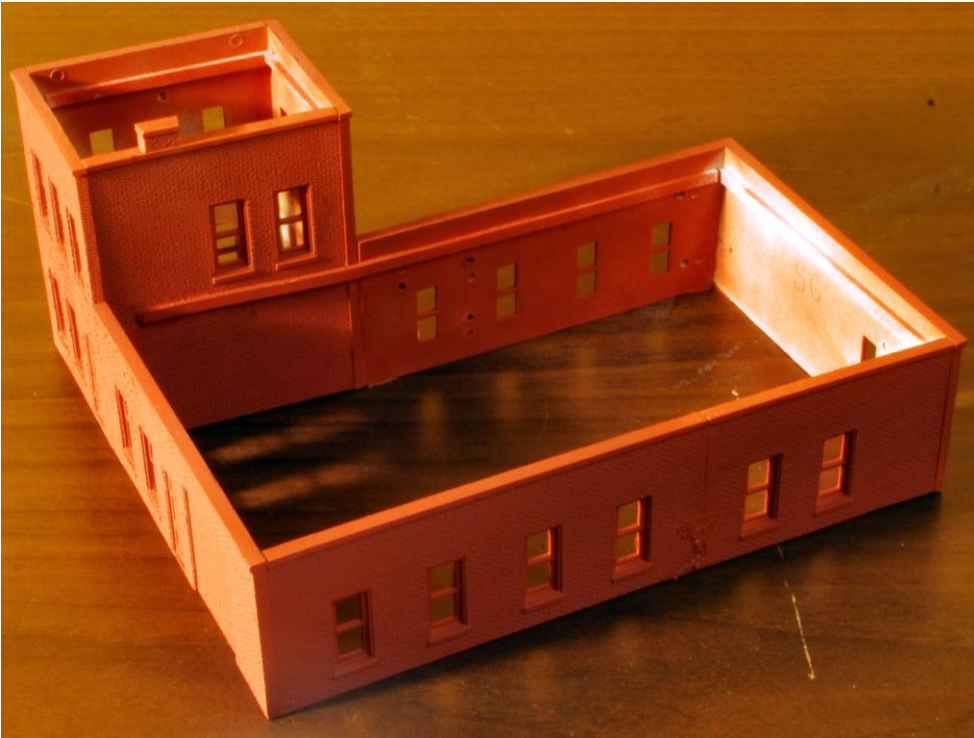
Don Ayres





Hank Kraichley, above

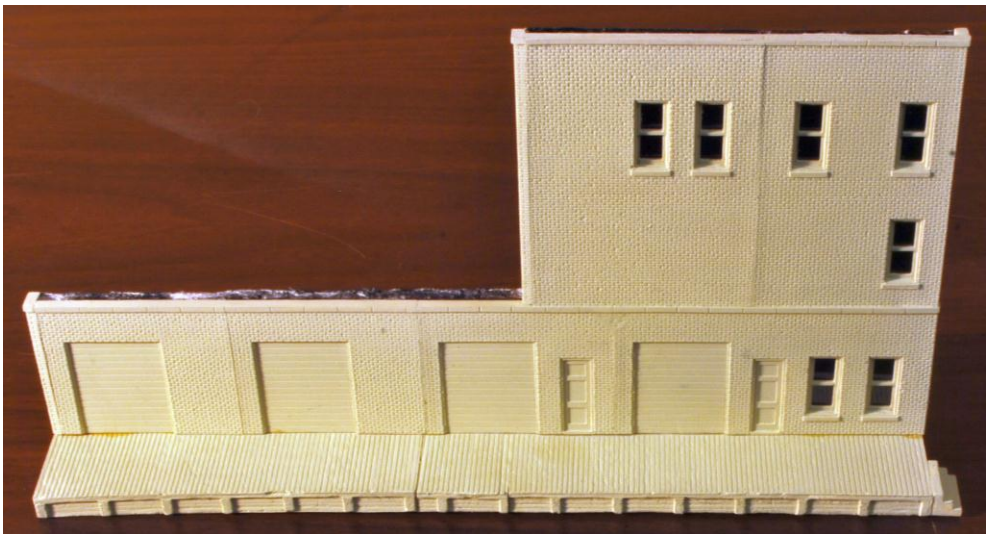
Ron Kraus, below





Dave Lyon, above

Larry Wodell, Below





Ray Jones, Second Place, above

John Carty, First Place, below



I based St. Clair Ice Co. on the original structure located at 5th and Main Streets in Belleville. This company supplied ice to the Griesedieck Western Brewery as well as to a number of businesses, including the Lincoln Theatre for air conditioning, in Belleville in the first half of the 20th Century. FKG Oil Co. now occupies the building, having painted the brickwork and added considerably to the structure. The wooden vats, constructed using the insert from the kit packaging, sit in the recessed area at the front of the building hold the brine necessary to make ice. The low wall in front of the shipping wing sits over the cave used to store the ice, a common practice in Belleville



until recently. The chimney consists of pieces cut from the left over wall pieces. The tank, modified from a DPM white metal casting, in the rear beside the coal bin holds ammonia. The ductwork on the shipping wing consists of the parts sprue sitting on pieces of strip styrene. Weathering consists of acrylic washes and dry brushing.

Craftsman Entries

Gregor Moe, Second Place

Beep Inc. was a simple kit bash only one wall had to be cut to fit and that one was one of the tower inside walls so the cut was hidden by the roof. The edges of the low walls



were sanded square and joined and reinforced. The tower walls were carefully sanded square where they joined the lower walls. When everything was together I painted the walls and windows. The roof was covered with the window glass protective sheets cut into 3 foot strips and laid into fresh paint and then topped with another brushing to smooth out the material some. The lettering and weathering was done with Pan Pastels. They are pastels but in a form like makeup. I brush them on till I have the effect I want.

Phil Bonzon, First Place

Description appears in the following article.



Kitbashing a DPM Model Contest Winner

by Phil Bonzon, MMR

Photos by the author

My models are usually scratch built to meet a specific purpose, but there are times when kit bashing fits the need. When the Gateway annual kit bash contest came around, I looked for a layout location and what would be best

suited for that location. This spring, my 11-year-old grandson, Matthew and I started building together an HO-scale layout for him. Matthew has participated in all aspects of the construction, from initial planning



through all the actual construction. In some cases, buildings that I had built for myself, but intend to replace, I have donated to his layout. When “DPM City Cab” kit was selected, I did not have a particular need for it, but Matthew’s layout needed a lot of buildings and I thought this kit could be made into a block of buildings for his urban area, which is Alton, Illinois located at the Alton Pool on Mississippi. Matthew sails with his father on the Alton Pool so is familiar with the area and that is what he wanted for his layout’s urban area.... Rule number one it’s his layout. The layout has a background divider running down its center separating the urban and the rural sides, which nicely extends the visual size of the layout and its operational possibilities.

So, when the kits and parts were given out in May, I already had a block long background model in mind and selected the parts that would give me the maximum wall space; Two-story components stretch a lot further than one-story and came be made into one-story if the need arrives. Also, background buildings give you a lot more building because of the “free” back wall. The contest rules stated, you could only use what comes with the kit and you could add a few ‘free’ specified areas, i.e., interiors, back walls for background building, bases and signage. You could use the scraps from parts, the instruction sheet and the cardboard to make parts...just think out of the box.

With the parts in hand, I photocopied all the parts so that I could build a paper mockup of the building and see where I needed to cut the parts. It is better to experiment with a paper mockup than with the actual kit parts, if

you make the wrong cut with the paper mockup, you can always photocopy another. And, with the paper mockup you can see how it fits the layout site. Planning is a step to building a good model, but still you must be flexible as things happen...Murphy’s Law.

The actual construction of a DPM kit is straightforward. Cuts can be made with



a razor saw and/or scribe the surface with #11 blade and snap the parts apart. Since the parts are molded, there is a draft angle on the edges; therefore the edges are not at 90 degrees, block-sand the edges to 90°. Clean up all the molding’s flash with a #11 blade and sandpaper. Some plastic putty is handy for correcting imperfections. I use CA adhesive for bonding the parts together making sure the parts are at the proper angle to each other. It is also handy to have some CA “Un-Bond” on hand, as you just might bond your fingers together and it helps un-bond parts if you goofed. Scrap pieces of the parts were used to make the additional chimneys required. For the ‘free’ back wall, I used foam board, which I left off until the interior was finished and embossed brick patterned styrene sheet for the

'free' base to simulate a cobblestone sidewalk.

Time to paint, but first I washed the model with warm soapy water to get rid of any oils from your hands. The model was airbrushed with Floquil's enamel primer and then with the main masonry colors, but before applying the masonry colors, I brush painted the windows. I also used a brush to touch-up the masonry colors next to the windows.

For the Piasa Plumbing building, I tried something that I had never done, I wanted a building that had stucco applied over brick, so I masked off some brick areas where I wanted exposed brick and then applied plastic putty overall, let it dry, sanded and removed the masking tape and I had the effect I wanted. The brick was painted a brick color and a tan was used for the stucco. After painting, the buildings were weathered using a combination of India ink washes and chalks.

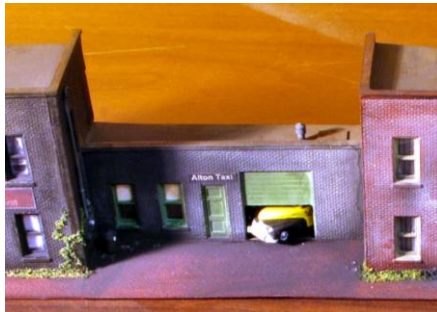
Weeds and vines were added to the sidewalk and buildings by first applying some Elmer's white glue and sprinkling Woodland Scenics' "Fine Turf" and Blended Turf" and brushing off the excess...Cobblestone sidewalks have weeds. Old newspapers, as trash, were added to the sidewalk in front of Alton Taxi and made by cutting up the printed instructions.

The 'free' signage was made on my computer and printed. After printing, I sanded the back of the signs to thin the paper, sanding in one direction from the center out and applying to the model with Elmer's white glue.

After painting, the clear styrene glazing was added to the interior side of the model with CA adhesive. For the Police Station ink lines on the inside of the glazing simulated iron bars.



Since the buildings will be lit when on the layout, I added some interior details; for the restaurant, I downloaded from the Gateway website http://gatewaynmra.org/library/restaurant_interior.jpg the interior of a restaurant and used that, plus a HO-scale man inside of the glass entrance door. For the Alton Taxi, I place a cast resin taxi inside with a mechanic next



to it and the garage door I made partly open; the Alton Police Station got a holding cell with a prisoner and some furniture in the office and finally Piasa Plumbing received some furniture; all just to provide hints of an interior and activity, since these are not foreground buildings, nothing more is required to give them life. After the contest, pedestrians, a few gulls and a fire

hydrant were added to the exterior, which were not allowed under the contest rules.

What makes a successful model: it is research, planning, construction and giving the model life, the first two research and planning are extremely important (especially with scratch building and kit bashing) construction is practice, and finally bringing the building to life takes it to the next level.

Be observant and don't be afraid to try and/or remake something. I have had reasonable success with my model building by following these principles, having built winning models at the NMRA Division, Regional, National levels and at the Narrow Gauge Associations National Contest. Try it, you will like it, and you will build better models....I did.

Gateway Division Report For June 2, 2012

MCoR BOD Meeting 10 May 2012

I. General Comments:

The Division continues to meet monthly on a rotating basis between the VFW Hall in O'Fallon, IL and Trinity Church in Chesterfield, MO. The average monthly attendance was 30 for January thru April 2012, and ranged from 21 to 39. The 21 attendances was an improvement for the O'Fallon meetings. Meetings on the Missouri side draw the larger attendance, ranging from 36 in March to 39 in January at Trinity. Our May attendance at Trinity is usually over 40, but since this report is being written before the May meeting, May attendance is not included. Meeting announcements are communicated by postcard to members who are current with their annual \$5 subscription fees or via e-mail to members who prefer this method of communication. Meeting info is also posted on the Gateway Division website which is www.gatewaynmra.org. Meeting and website updates are available through our RSS feed at <http://feeds.gatewaynmra.org/GatewayNMRA>.

II. Division Monthly Meetings/Clinics: January through May 2012

January: Trinity – Steve Brawley presented 'How to Build a Static Grass Applicator for under \$20'

February: O'Fallon, IL. - Dave Roeder MMR and Pete Smith MMR demonstrated different 'Methods of Building Trees'.

March: Trinity – Richard Barker presented 'Operations on a Two-track Layout without Extensive Staging'.

April: O'Fallon, IL. – Hank Kraichely gave an update on preparations for the June 2012 MCoR Convention in St. Louis and John Golden discussed RPM.

May: Trinity - Members will receive a DPM plastic building kit with extra parts to be kitbashed and then judged at the September meeting. Richard Schumacher will present 'Custom Decals- Design, Artwork, Materials and Printing Methods.

III. AP Activity:

No new AP certificates were awarded during this period although we have a couple of members working towards certificates.

IV. Membership Activity:

Our Division has not had its usual activities i.e., train shows, membership recruitment, layout tours, operation weekends and field trips, as we have been spending our time preparing for the 2012 MCoR Convention in St. Louis.

Don Taschner MMR has resigned, as Co-AP Chairman with Phil Bonzon MMR and Phil Bonzon MMR has been appointed the AP-Chairman.

Jimmy Ables has been appointed Membership Chairman.

John Carty has been appointed the new Editor of the Division publication "RPO"; replacing Carolyn Kraichely who served as interim Editor after Mike Thomas resigned. Our thanks go to Carolyn for serving as interim Editor and our support goes to John Carty as the new Editor of RPO.

V. The Gateway Division website, managed by Richard Schumacher, continues to be one of the best model railroading websites and is very active with viewers from all over the World.

V. Officers/Department Chairs for 2012:

Superintendent: Hank Kraichely

Assistant Superintendent: Bill Linson

Division Director: Phil Bonzon MMR

Paymaster: Dave Lyon

Clerk/Secretary: Don Ayres

Membership Chairman: Jimmy Ables

Monthly E-mail Notice Manager: Jimmy Ables

AP Chairmen: Phil Bonzon MMR

RPO Editor: John Carty

Gateway Website Manager: Richard Schumacher

Outside Activities: Ron Gawedzinski

VI. Death of members since the January 2012 report: I am saddened to report the passing of Gateway member Richard Laux in December 2011. I sent an E-mail to Whit Johnson and NMRA HQ on January 15, 2012 regarding Rich's passing. Rich was an active member, who brought the refreshments to our Trinity meetings and will be missed by all.

VII. The Gateway Division has been preparing to host the 2012 MCoR Convention in St. Louis. The Co-Convention Chairmen are Hank Kraichely and Bob Amsler. The other committee members include Bill Linson, Dave Roeder MMR, John Hardy, Gary Gross, Ron Gawedzinski, Ken Thompson and Rich Schumacher. They deserve special thanks for their efforts and hard work in the planning and preparation of the 2012 Convention.

VIII. Don Taschner deserves special thank you for his years of devotion to the AP Program as Chairman and lastly as Co-Chairman. Also thanks to Carolyn Kraichely for filling the gap as interim RPO Editor.

Finally, we will continue to promote membership in the NMRA and try to provide interesting clinics and activities to retain and attract new members.

Phil Bonzon MMR - Gateway Division Director

A Computer Based Dispatcher's Panel

by Peter Broadhead

Editor's Note: This article is taken from the September 14, issue of the "Highball", a Newsletter of the American Central Model Railroader's Group, based in Australia.

BACKGROUND NOTES

The computer software which provides the panel is called TCC and was developed in England by Howard Amos. A computer engineer, Howard was very interested in computer control of model railways and purchased some CTI hardware and associated "Train Brain" software (www.cti-electronics.com). Finding it expensive and to run very slowly, he wrote his own software, and has steadily enhanced TCC over several years (see www.qtutrains.com for details). TCC controls trains through logic written in a simple script and interfaces to the layout through RPC hardware modules (merg.org.uk/forum/merg-rpc.php) which handle discrete input from switches, block occupancy detectors, etc., and discrete outputs to signals and turnouts; and for DC layouts, Howard's Quad Throttle Unit (see qtutrains.com).

Howard now lives near Nelson and has built up the dispatcher's panel for this layout. Although block DC control is simpler and better for computer control of a layout he has recently added support for NCE DCC, so it is intended that TCC train control will eventually be incorporated into this layout. The layout track is divided into about 50

electrical blocks, each with a coil-type occupancy detector. These were built by myself on PCBs at a relatively low cost. The input from each detector is connected to one of two RPC input modules and thus via the RPC computer interface to TCC. Because TCC is available as a download free of charge (it also needs Java) and the RPC modules and the block detectors are relatively inexpensive, the system has been assembled for a relatively low overall cost – it runs on a 12-year old laptop running Windows NT! For more details, just contact p.j.bro@silkwweb.net.nz and I will call you.

The dispatcher's panel assists a dispatcher in monitoring and controlling operations on the layout. There are three windows, as follows:

The Track diagram window displays the location of each train and what it is doing.

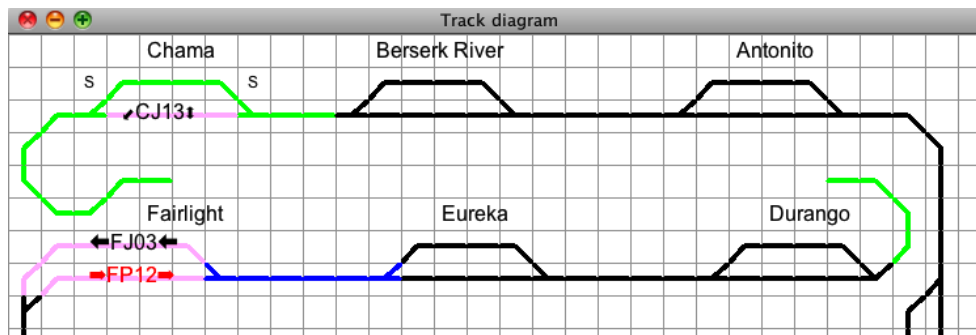
The Train Data window lists all operating trains, where they are, what they are doing and how they are keeping to the timetable.

The Schedule window normally shows the remaining schedule for the currently selected train but can switch to showing the remaining schedule for the selected town.

Most operator interactions are performed with the mouse but there are a few keyboard commands. During an operating session, train drivers need to call the dispatcher for permission to proceed to the next town and also for permission to shunt once they arrive. The dispatcher must check that their requests are valid before entering the request into the panel and giving permission to proceed. For example, when a driver requests clearance to proceed to the next town, the

when not actually travelling, the next route the train should follow is also identified. If a train is shunting, then a 'S' indicator is shown above the turnout(s) which it is cleared to use. Track sections are coloured according to their status as follows:

- Red Train needs attention, or illegal occupancy (in accordance with the scheduled train list)
- Plum Occupied track
- Light blue Tracks owned by the



dispatcher needs to check that the track to the next town and at least one track at the next town are clear. The layout must also be checked to ensure that no deadlock situation can develop and that the timetable is adhered to – in particular, passenger trains must never depart early. When a passenger train arrives at a station the dispatcher should check that the next station is ready to receive the train. If a freight train is shunting at the next town, the driver must be called (by telephone) to ask for the platform track to be cleared for the passenger train.

THE TRACK DIAGRAM WINDOW

The track diagram shows only the mainline track and the 2 main tracks in each town. Each train is shown as a label beside the track section which it is occupying. In addition, the track that the train 'owns' is highlighted and,

- selected train
- Dark blue Tracks needed by selected train for its next movement
- Green Tracks owned by other trains than the selected one
- Black Free tracks

The track diagram is made up on a grid and some squares contain parts of tracks. In operation the dispatcher clicks on the squares. Train descriptors (like 'CJ13') are shown with directional arrows. The selected train is red. The turnouts in station 'Chama' are labeled 'S' to show 'CJ13' shunting.

THE TRAIN DATA WINDOW

This window permanently lists all the active trains the panel is monitoring. Listed against each train's label is its DCC decoder ID, its location on the layout, what it is doing (status) and how well it is adhering to the timetable. The

currently selected train descriptor is shown in red.

The statuses are as follows:

Waiting: Waiting for the scheduled departure time, or for clearance to shunt or depart.

Shunting: Delivering or collecting cars. May be using more than one track or the main line.

Departing: The train has been cleared for departure but not departed.

Changes to Travelling once departed. Travelling Between towns.

Needs attention: Set by dispatcher if a problem needs resolving. Tracks and status are shown in red.

If the train arrived early or late, this is displayed above the status, as is the time before its scheduled departure.

THE SCHEDULE WINDOW TRAIN SCHEDULES

For each remaining town the train is

due to move to, its departure time is listed. If the train is expecting to meet another train at a town then the currently anticipated meeting times are shown. The departure times shown are the timetabled times, even if the train is running late. The meeting times are the current best guess based upon how early or late the trains are.

STATION SCHEDULES

Clicking on a town name switches the schedule window to showing expected activity at that town. This includes the times when each train is expected to arrive and depart and how early or late the trains are. If two trains are expected at the same time then they are indicated as 'meeting' so the dispatcher can anticipate the situation.

KEYBOARD USE AND THE STATUS BAR

Keyboard use is rare but may be used as follows:

The screenshot displays the 'Tcc: despatch' software interface. The main window is titled 'Track diagram' and shows a complex railway network with various tracks and stations. The stations shown include Chantia, Berserk River, Arionito, Fairlight, Eureka, Durango, Gelsen, Hood Mountain, Incline, Roseburg, Junction City, Pueblo, and Denver. The train 'DJP140' is highlighted in red, indicating it is the currently selected train. The status bar at the bottom shows '99 loops/sec.', '12:08:01', '00:00:10.4', 'Authorised route for CJ13 to E1', and 'Serial 1 5.0 msgs/sec.'. The status bar also includes a 'Start' button, a 'Shorcut to despatch.bat' button, and a 'Tcc: despatch' button.

On the right side of the interface, there are three panels:

- Train Data:** Lists trains and their statuses: FP12587 Fairlight (Waiting 4 mins LATE), JP14 9261 Junction-C (Waiting 4 mins LATE), and FJ03 9060 Fairlight (Waiting).
- Clock:** Shows the current time as 12:08:01.
- Schedule for train CJ13:** Shows the train's schedule, including departure times and meeting times: 12:23 Durango, 12:41 Meet FP12 at 12:05, 14:59 Eureka, 13:28 Fairlight, and 13:48 Hood Mountain and Incline.

At

any time – set time, set fast clock, list timetables, get help

At session start – continue from state left after last session, set trains to the start of the named timetable, create trains xx minutes before planned departure time.

During a session – add extra trains (from the named timetable), remove a train from service.

SELECTING A TRAIN TO WORK ON

Only the currently selected train can be affected by the dispatcher. To select a train, click on the track square containing the label for that train, or on the label in the train data window. The currently selected train has its label displayed in red on both windows.

Once a train has been selected, the dispatcher may grant its use of some track, withdraw such permission, move the train label, examine the train's schedule, etc. A train wishing to move can be given ownership of the track ahead of it by clicking on that track. For example, in the Track Diagram above, the next movement for FP12 is towards Eureka, as shown by the track in blue. When in a town, shunting beyond the occupied track may be authorised by clicking one or both of the turnout squares at each end of the town.

5th Annual Gateway Division/NRHS Picnic

by Ron Gawedzinski

On Saturday, September 15, 2012, the Gateway Division NMRA and the St. Louis Chapter NRHS held the 5th Annual Picnic of two fine train groups for the first time at the Museum of Transportation, Kirkwood, Missouri. The museum hosts the most complete collection of American rail power in the

world, along with its collection of automobiles, buses, streetcars, aircraft, horse-drawn vehicles and riverboat materials.

The sky was overcast most of the day with the temperature reaching about 70 degrees in the afternoon. But folks had fun exploring all the attractions, visiting the new Visitor Center, riding the miniature train and the 1914 vintage streetcar. The food, drinks and snow cones were plentiful. Some new train friends were made.

This year 97 members, families and guests from both groups attended the picnic.

There were 29 volunteer workers who were great in performing the many jobs at hand: Don Ayres, Neil Bedi, Mary and Bill Birdsell, Fred Blank, Pat and Phil Bonzon, Kathy and Steve Brawley, Tony Brawley, Nancy Carrol, Rich Eichhorst, Ron Gawedzinski, Bill Heger, Hank Kraichely, Ron Kraus, Bill Miksicek, Jean Myers, Joe Obernuefemann, Deb Salter, Bill Schaberg, Mark Schuermann, Rich Schumacher, Lynne and John Stoecker, Eileen and Al Weber, Gail and Kelvin Wilke. Without your help this event could not have been held. (If I have accidentally left off your name please let me know so that I can correct my error. Ron)

Special thanks go to Bud Anderson for donating his time and providing free snow cones to the people at the picnic. While the weather was a little cool many fine compliments were made about the refreshing and tasty snow cones that were provided.

A number of members of the Gateway Div. and the St. Louis Chapter donated an extra-large amount of attendance prizes this year. Many thanks for your donations. Everyone got a chance to win something.

The Officers' of the Gateway Division NMRA and the St. Louis Chapter NRHS thank the members, families and guests for their attendance, their help and their donations that made this picnic a great success.

Thanks for coming! Ron

Regulations of the Gateway Division

Article I

Name, Purpose and Legal Status

SECTION 1: The Gateway Division was organized as a subordinate body of the Mid-Continent Region of the National Model Railroad Association, Inc. The full legal name of the Division is the Gateway Division of the Mid-Continent Region of the National Model Railroad Association. The Gateway Division will hereafter be referred to as the "Division," the Mid-Continent Region as the "Region," and the National Model Railroad Association as the "Association."

SECTION 2: The purpose of the Division is to promote fellowship among model railroaders, to educate them and the public about the hobby, to develop the various skills of the hobby, and in general to advance the hobby of model railroading. The Division shall pursue and achieve these purposes through publications, functions, and all other things necessary within the boundaries established by these Regulations and the Region.

The Division is organized exclusively for educational, charitable, literary, and scientific purposes within the meaning of Section 501(c)(3) of the Internal Revenue Code. The Division shall not discriminate on the basis of race, color, or religion.

SECTION 3: The boundaries of the Division are the same as the boundaries of the United States Postal Service zip codes of 62001 through

62299, 62410, 62434, 62436, and 62801 through 62999 in Illinois and 63001 through 63399 in Missouri.

SECTION 4: The status of the Division is that of a subordinate body of the Region. The Division is a non-profit corporation organized under the laws of the State of Missouri. All actions taken by the Division, or by members acting under the authority of the Division, which substantially comply with these Regulations of the Division, shall be construed as acts authorized by the Division. In case of conflict between these Regulations of the Division and those of the Region, those of the latter shall be deemed controlling. These Regulations of the Division, and all amendments thereto, are and shall be subject to approval by the Region.

SECTION 5: The Division is the successor to the St. Louis Area Model Railroaders which is hereby merged completely, including all assets and liabilities, into the Division.

SECTION 6: These Regulations shall become binding only after approval by two-thirds of all members voting in a special election called for such purpose, and then subsequent approval by the Region.

SECTION 7: Functions of the Division include business meetings, meets, excursions, and all other organized activities, which help fulfill the stated purpose of the Division.

SECTION 8: No part of the net earnings of the corporation shall inure to the benefit of, or be distributed to, its members, directors, officers or other private persons except that the corporation shall be authorized and empowered to pay reasonable compensation for services rendered.

SECTION 9: No substantial part of the activities of the corporation shall be carrying on of propaganda or otherwise attempting to influence legislation and the corporation shall not participate in

or intervene (including the publishing or distribution of statements) in any political campaign of any candidate for public office.

SECTION 10: The corporation shall not carry on any other activities not permitted to be carried on (a) by a corporation exempt from Federal Income Tax under Section 501 (c)(3) of the Internal Revenue Code of 1954 (or corresponding provisions of any future United States Internal Revenue Law) or (b) by a corporation, contributions to which are deductible under Section 170(c)(2) of the Internal Revenue Code of 1954 (or corresponding provisions of any future United States Internal Revenue Law).

Article II

Membership and Fees

SECTION 1: There shall be one class of membership in the Division: Regular Membership. Only a member of the Association in good standing living within the boundaries of the Division is a member of the Division.

SECTION 2: Only Division members have the right to vote or hold office in the Division.

SECTION 3: The officers of the Division shall have the authority to fix fees for any services or products offered to members of the Division, members of the Association, or the public. Fees charged to members of the Division and members of the Association shall be the same. (Additional fees such as shipping costs may be assessed differently based upon the costs to the Division.) Fees charged to the public may, at the discretion of the officers, be higher than fees to Association members.

Article III

Voting

SECTION 1: All amendments to this document and the election of the Directors shall be submitted to the

membership for a vote. Any other matters as the Board of Directors decides shall also be submitted to the membership for a vote.

SECTION 2: The Superintendent shall appoint a three member Nominations Committee to which all nominations for the Board of Directors shall be submitted. The Superintendent shall also appoint a three member Election Committee, which will manage the election, no member of the committee can be nominated for or be elected to the Board of Directors. All nominations for the Board of Directors shall be submitted to the Clerk in writing and signed by the Chairman of the Nominations Committee no later than October 1 of the year of the annual election. The Clerk shall then put all such nominations on a paper ballot and distribute one copy of the ballot to each member of the Division. The ballots shall be distributed no later than the third Saturday of November and shall bear the contact information of the Chairman of the Election Committee. To be valid, each such completed ballot must be received by the Chairman of the Election Committee no later than the second Monday in December. The ballots received by the Chairman of the Election Committee shall be held by the Chairman for counting by the entire Election Committee. The results of the election shall be faithfully presented to the membership by the Election Committee at the December meeting.

SECTION 3: Each ballot, in order to be valid, shall have upon it the statement "I certify that I am a member in good standing of the NMRA and that I reside within the boundaries of the Gateway Division" and shall bear the true signature of the member voting.

SECTION 4: All proposed amendments to the Regulations shall be submitted in writing to the Clerk. A

majority of the Board of Directors shall vote upon whether to place the proposed amendment to a vote of the membership. If the Board of Directors approves of the amendment, the Clerk shall then distribute to each member a notice stating the wording of the proposed change for consideration by the membership and advising of a vote at the next business meeting.

SECTION 5: The right of petition shall be preserved. A petition must be submitted to the Clerk setting forth in easily understandable terms the issue for submission to the membership and shall contain the true signatures of at least ten members of the Division. If a petition meets these requirements, then the matter shall be put to a vote of the membership regardless of whether the Board of Directors approve of the petition.

Article IV

Board of Directors

SECTION 1: The officers as set forth in Article V shall constitute the Board of Directors.

Article V

Officers

SECTION 1: The officers shall consist of a Superintendent (President), Assistant Superintendent (Vice President), Division Director(s) (as authorized by agreement with the Region), Clerk (Secretary), and Paymaster (Treasurer).

SECTION 2: All officers shall assume office at the end of the December meeting. The terms of office shall be one year for all of the officers other than the Division Director(s). The Division Director(s) shall serve a three year term of office.

SECTION 3: The general management of the Division shall be vested in the officers.

SECTION 4: The Superintendent shall not be the same person as the Clerk.

SECTION 5: The Superintendent shall preside at all meetings.

SECTION 6: The Assistant Superintendent shall assist the Superintendent, shall preside for the Superintendent in his or her absence and shall assume the office of Superintendent should it be vacated. In addition, the Assistant Superintendent shall take the minutes of all meetings from which the Clerk is absent.

SECTION 7: The Clerk shall take the minutes at all meetings.

SECTION 8: The Paymaster shall receive fees and function proceeds, shall keep a true record of the membership and each member's standing, shall keep a true account of all funds received and disbursed, and shall render a proper accounting of the Division's finances at each business meeting. The finances shall be subject to an annual audit and review by a properly qualified member of the Division who shall be appointed by the Superintendent.

SECTION 9: The Division bank accounts shall be those provided for non-profit organizations. There shall be only one checking account and whatever other accounts the membership, by vote, deems necessary.

SECTION 10: Disbursements for non-budgeted items must be approved by at least two officers.

SECTION 11: Meetings of the officers shall be conducted by any lawful manner.

SECTION 12: Administrative duties may be conducted by assistants, for whose conduct and actions their principals are responsible.

SECTION 13: If the Division Director fails to attend any meeting of the Board of Directors of the Region without assigning a proxy, then the Division Director shall immediately face a recall

election as set forth in Article V, Section 16, and the sole question shall be whether the Division Director shall be retained. The failure to attend a meeting shall be “good cause” and no petition shall be necessary. The failure to attend is sufficient in and of itself to cause the recall. If the Division Director is not retained, the Superintendent shall appoint a successor until a special election can be held pursuant to the procedure set forth in Article III, Section 2. The time limits for the voting shall be set so as to allow sufficient time for the election to take place.

SECTION 14: The records of the Division, including, but not limited to, the minutes, list of assets or property, corporate papers, and legal documents, shall be kept by the Clerk. The Clerk shall turn over such records at the end of his or her term of office to his or her successor.

SECTION 15: In the event a Director is no longer able or willing to fulfill his or her duties, such as in the event of death, legal incompetence, severe illness, recall from office or resignation, the Superintendent shall appoint a member to fulfill the vacant office. The Superintendent shall only appoint a new Division Director for an interim period of time until an election shall take place to complete the remaining term of the Division Director.

SECTION 16: In order to recall a member of the Board of Directors for good cause, a petition must be submitted to the Clerk alleging the reason for the recall and containing the true signatures of at least ten members of the Division. Upon receipt of such a petition, the Clerk shall notify the Superintendent who shall appoint a three member Election Committee, which will manage the election. The Clerk shall distribute to each member a

notice of the recall election to take place at the next business meeting which is at least seven days after the distribution date of the notice of the recall election. The recall election shall take place by secret ballot and the recall is effective upon a vote of two-thirds of the members constituting a quorum. The Election Committee shall count the secret ballots and faithfully present the results to the membership. If the Superintendent or the Clerk is the member of the Board of Directors who is the subject of the recall petition, then the Assistant Superintendent shall perform the above-mentioned duties of the Superintendent and the Paymaster shall perform the above-mentioned duties of the Clerk. If the Superintendent is the subject of the recall petition and the recall passes, then the Assistant Superintendent shall automatically become the Superintendent and appoint an Assistant Superintendent.

Section 17. Should a member of the Board of Directors be suspected of misuse, misconduct, detrimental performance, breach of the Director's fiduciary duties or malfeasance in office, the member of the Board of Directors is to be removed in accordance with the disciplinary procedures set forth in the current edition of Robert's Rules of Order.

Article VI Meetings

SECTION 1: At least one business meeting shall be held each year in December.

SECTION 2: At any business meeting, a vote by the majority of the regular members in good standing in attendance, as recorded by the Clerk, shall be sufficient for the enactment of business.

SECTION 3: A quorum shall constitute those members of the Division at a

meeting, after having a meeting announcement notice distributed, or those members of the Division which return a ballot within the prescribed time limit.

SECTION 4: The Clerk or Assistant Superintendent shall distribute the notice of all business meetings to each member and keep the minutes of all meetings.

SECTION 5: All meetings shall be conducted according to Robert's Rules of Order.

SECTION 6: For any matter that arises and that is not governed by these regulations, the latest edition of Robert's Rules of Order shall govern. Article VII

Dissolution

SECTION 1: Upon dissolution of the corporation, the Board of Directors shall, after paying or making provisions for the payment of all of the liabilities of the corporation, dispose of all the assets of the corporation exclusively for the purposes of the corporation in such manner, or to such organization or organizations organized and operated exclusively for charitable, educational, or scientific purposes as shall at the time qualify as an exempt organization or organizations under Section 501(c)(3) of the Internal Revenue Code of 1954 (or the corresponding provision of any future United States Internal Revenue Law), as the Board of Directors shall determine.

SECTION 2: Any such assets not so disposed of shall be disposed of by the Circuit Court of the county in which the principal office of the corporation is then located, exclusively for such purposes or to such organization or organizations, as said Court shall determine, which are organized and operated exclusively for such purposes.

SECTION 3: The Division expresses a preference that any assets not so disposed as set forth above be

distributed to the Region, which is a not-for-profit corporation.

Timetable of Events

22nd annual Greater St Louis Metro Area Train Show, sponsored by MVNS, Oct 13-14, 111 S. Geyer Rd, Kirkwood
Dreamland Palace Train show, October 27, 10 am to 3:30.

The Gateway Division Fall Meet has been cancelled for this year.

Great Train Expo, Collinsville, IL, Nov 24 and 25, 10 – 4pm

Brian Post will be hosting his annual open house at 248 Pardella in St. Louis on December 29, 2012; from 10 a.m. until 6 p.m. Bring your own Digitrax throttle if you like. Also feel free to bring your own locomotives (with decoder) and/or rolling stock. You may contact Brian at 314-249-6986.

Turkey Creek will be hosting next year's Mid-Continent Region Convention in Olathe, Kansas.

NMRA's convention and national train show will be in Atlanta, Ga, July 14 - 20

Division Minutes

by Don Ayres

Meeting Minutes for June 18, 2012

Hank Kraichely, Superintendent,
hkraichely@sbcglobal.net

Bill Linson, Assistant Superintendent

Phil Bonzon, MMR, MCoR Director

Don Ayres, Clerk, ayresd1@charter.net

Dave Lyon, Paymaster

Ron Gawedzinski, Activity Coordinator

CLINIC – Dave Roeder showcased several layouts in the greater St. Louis area with a slide show of layouts of the following individuals: Chris Zygmunt,

Jerry Prott, Fred Houska, Dave Bartz, Bob Boedges, Don Morice, Bill Giese, Mike Wise, Ron Schlueter, John Schindler, Rene Lavoise, Bob Brady, and Herb Gilden. Dave took most of the pictures himself. Many of these layouts were open at the recent MCoR Convention.

BUSINESS MEETING –

The Clerk called the business meeting to order at 8 PM. There were 20 members present, and no guests. John Golden and Rob Kurtz are returning guests. Both claimed to have their checkbooks on them. The crowd also included our newest youth member, Noah Oestreich. Neither the Superintendent nor the Assistant Superintendent were present. Hank was not feeling well, and Bill was travelling.

Minutes of the Previous Month's Meeting

The minutes of the May meeting were APPROVED as read. Approved minutes are published in our quarterly publication, the RPO.

Paymasters Report

Dave brought both the May and June reports with him. He first pointed out the unusual closing date for this month's Financial Report – 2 June. He explained that there were some outstanding expenses from our Regional expenses that the checks were still outstanding for. Following some brief discussion, both reports were ACCEPTED as submitted.

Merchandise Report

The 33" wheels sets still are not here yet. He reminded the group that he has several different NMRA standards gauges for sale. These items are sold to members at a reduced cost as a member benefit.

RPO Report

John Carty was not present. No report.

Directors Report

Phil mentioned the following 3 things: Turkey Creek will be hosting next year's Mid-Continent Region Convention in Olathe, Kansas. There is a new committee for the MCoR website. One committee member is our own Richard Schumacher. Marty Vaughn has retired as AP chair at Region. Brad Morneau will take that post.

Achievement Program (AP) Report

Phil thinks that Bob Johnson is about ready to submit for his Author Certificate.

Monthly Meeting Clinician Report

August - Jim Ables will present our clinic on creating a video

September – Bring in your completed DPM kit night

October – Brian Post will present a clinic on the Rail-Op operating system, a computer program to set up an operating session.

Old Business

Dave Roeder talked about our recent MCoR convention. There were 225 total paid conferees (some were spouses at \$10 fare). Only 300 additional people paid to see the train show, but the vendors all seemed very happy. The 3 prototype tours were all full, or nearly full. All layout tours were well attended, averaging perhaps 50 or so visitors in each case. Several comments from attendees were related to the fact that there was too much to do in too little time. The clerk stated that he would hold this item open in the minutes until we get a financial closeout. OPEN

New Business

No new business.

Announcements

Phil had some sample tee shirts available and was taking orders. They have our logo on them for sale. \$12

Brian Post talked about a new product emerging on the market – battery packs installed in locomotives. This would enable you to run a loco in dcc mode on a dc layout, or even opens up the possibility of having a layout with non-powered track.

50/50 –

Twenty-eight dollars was collected, and Jim Anderson won the drawing and took home \$14. The treasury was enriched by \$14. Dave won the Mark Twain Hobbies' gift card.

Adjournment

Don asked for a MOTION to adjourn the business meeting 8:28PM. Gregor Moe made the MOTION, and it was SECONDED by Brian. PASSED by all.

Meeting Minutes for July 16, 2012

Hank Kraichely, Superintendent,
hkraichely@sbcglobal.net

Bill Linson, Assistant Superintendent

Phil Bonzon, MMR, MCoR Director

Don Ayres, Clerk, ayresd1@charter.net

Dave Lyon, Paymaster

Ron Gawedzinski, Activity Coordinator

CLINIC – Rich Zellich presented his video on St Louis railroading – vintage 1960's. It was an interesting journey into the past! Thanks, Rich.

BUSINESS MEETING –

The Superintendent called the business meeting to order at 7 PM. There were 32 members present, and 1 guest. Ron Gawedzinski's grandson David accompanied him to the meeting.

Minutes of the Previous Month's Meeting

The minutes of the June meeting were APPROVED as read. Approved minutes are published in our quarterly publication, the RPO.

Paymasters Report

Dave started out by saying that there is nothing unusual about this month's report. The monthly report shows that we had over \$1000 loss due to the convention. Dave said that this monthly snapshot is not reflective of how we came out financially on the convention. Hank will comment later in the meeting about the convention. There was an outstanding question from a previous meeting: Dave was asked about an \$800 expenditure. This was when the DPM kits were purchased. He concluded that we were still solvent. A member asked why we seemed to be carrying a \$25,000 balance over the years. Dave explained that the balance has slowly dropped over time. There is only one annual recurring source of income, the Fall Meet. We have many expenses, and inflation is taking an ever increasing bite. The interest on this amount further helps sustain us. We could spend it to zero, but Phil pointed out that NMRA does not permit us to collect "dues". We would have to find some other source of income. We now enjoy many member benefits including a free contest kit passed out in May, and the free picnic in September.

Merchandise Report

Tim said that he still has not received the wheelsets. He speculated that perhaps they were at the bottom of the ocean? These items are sold to members at a reduced cost as a member benefit.

RPO Report

John Carty was not present. He should be putting together the summer edition now.

Directors Report

Phil was present, but had nothing to report.

Achievement Program (AP) Report

No report.

Monthly Meeting Clinician Report

September – Bring in your completed DPM kit night

October – Brian Post will present a clinic on the Rail-Op operating system, a computer program to set up an operating session.

Old Business

The 2012 MCoR Convention is over. Hank was asked to mention a few of the names of those who volunteered:

Hank and Bob Amsler co-chaired the event.

Gary Gross managed the money and registrations.

Dave Roeder set up the layout tours.

Bill Linson set up the clinics.

Ron Gawedzinski put together the prototype tours.

John Hardy took care of facilities.

John Stork, Jim Ables, Chris Oestrich, all were at the convention and filled gaps as needed.

Hank said that 184 full fares and 46 spouse fares were purchased. While the hotel bill is still under discussion with the new

management of the hotel, Hank cautiously estimated that our profit might be around \$3900. We will have to share half of that with Region. We did better than the previous conventions in Cedar Rapids and Norfolk. OPEN, until final financial closeout.

New Business

Picnic – Planning is already well under way for the annual joint picnic that we do every year with the St Louis chapter of the National Railway Historical Society. It will be at the Museum of Transport this year on September 15, from 11am to 4pm. We will have our own separate area to be in. He had a sign-up sheet available. This event is a free member benefit. He requested everyone donate an attendance prize. OPEN

The laser printer that the Division owns is quite old and connectivity is getting to be a problem. After some discussion, a MOTION was offered by Phil, and SECONDED by Rich Lake to authorize the

clerk to spend up to \$500 for a new color laser printer. MOTION PASSED. OPEN, pending purchase of the printer.

Announcements

Phil is still selling logo t-shirts.

Hank gave a pep talk about completing the DPM kit due in September, and discussed some of the rules of the contest.

Hank announced that we will need a whole new batch of officers for 2013. All currently serving officers have done so for at least 4 years. The 5 positions open are Superintendent, Assistant Superintendent, Clerk, Paymaster, and MCoR Director.

50/50 –

Forty one dollars was collected, and Chris Oestrich won the drawing and took home \$21. The treasury was enriched by \$14. Dick Wenger won the Mark Twain Hobbies' gift card.

Adjournment

The meeting was adjourned with no vote as the video started.

Meeting Minutes for August 20, 2012

Hank Kraichely, Superintendent,
hkraichely@sbcglobal.net

Bill Linson, Assistant Superintendent

Phil Bonzon, MMR, MCoR Director

Don Ayres, Clerk, ayresd1@charter.net

Dave Lyon, Paymaster

Ron Gawedzinski, Activity Coordinator

CLINIC –

Jim Ables presented an excellent clinic on videography. He talked about equipment, shooting techniques, editing techniques, and posting your masterpiece to YouTube. Thanks, Jim!!

BUSINESS MEETING –

The Superintendent called the business meeting to order at 8:26 PM. There were 17 members present, and 1 guest. A J Holko came back to check us out again.

Minutes of the Previous Month's Meeting

The minutes of the July meeting were APPROVED after getting the name of the gift card winner. Approved minutes are published in our quarterly publication, the RPO.

Paymasters Report

Dave presented this month's report with the following 2 explanations: the \$61.25 in income "cleans out" our PayPal account from the convention. Also, the \$199.98 in miscellaneous expenditures is our new laser printer (mentioned below). APPROVED as read.

Merchandise Report

Tim finally received the Intermountain wheelsets. They are on sale for \$6 for 12 axles. These items are sold to members at a reduced cost as a member benefit.

RPO Report

John Carty was not present. Either John sent the wrong to Jim Ables for distribution, or Jim mistakenly sent out an older version of the RPO. He will get the newest version distributed.

Directors Report

Phil was present, but had nothing to report.

Achievement Program (AP) Report

Bob Johnson's paperwork for "Author" has been sent to National.

Monthly Meeting Clinician Report

September – Bring in your completed DPM kit night

October – Brian Post will present a clinic on the Rail-Op operating system, a computer program to set up an operating session.

Old Business

2012 MCoR Convention: We still haven't settled with the hotel yet. OPEN, until final financial closeout.

Laser Printer: This item, approved last month, is now purchased. CLOSED

Joint Picnic: Ron reminded everyone that the joint picnic that we have every year with the St Louis Chapter of the National Railway Historical Society is coming up. He encouraged everyone to sign up ASAP and also to volunteer to help with setup or teardown. This is a free event for members, families, and guests.

OPEN

New Business

Officer Elections: Hank reminded everyone that officer elections are coming up, and encouraged those willing members to volunteer for one of the 5 available positions.

OPEN

Announcements

Our very own Phil Bonzon, MMR, has run away with all 3 places in the steam category at the National Convention. He also won the William J. Lenoir Memorial Award for the best scratch built steam engine. Phil received a warm round of applause from the membership.

Ron invited us to an NRHS event: A presentation at the Cliff Cave Library given by Gregory Ames, retired curator of the Barriger Library, will speak on railroad books, Trains and Children's Literature for Adults. Adults and children welcome. Thursday, Sept 27, 7:00 PM.

Hank reminded everyone about the Fall Meet on Nov 3, and requested volunteers for setup and teardown.

50/50 –

Thirty dollars was collected, and Kathy Brawley won the drawing and took home \$15. The treasury was enriched by \$15. Dick Wenger won the Mark Twain Hobbies' gift card – his second month in a row!

Adjournment

Jimmy Ables made a MOTION to adjourn at 8:46 PM. SECONDED by Gregor Moe. MOTION PASSED.

NMRA MCoR Region & Gateway Division

The National Model Railroad Association (NMRA) is a world-wide organization dedicated to all aspects of model railroading. In order to bring the most benefit to its members, the association is subdivided into Regions, and each Region has a number of local Divisions. National dues are \$66 per year, and all members of the NMRA are automatically members of the Region and Division in which they live. The Gateway Division is part of the Mid-Continent Region, which represents Missouri, Kansas, Arkansas, Oklahoma, Nebraska, and parts of Iowa and Illinois.

The Mid-Continent Region publishes a digital quarterly bulletin, *The Caboose Kibitzer*, and holds an annual convention meeting that usually includes modeling clinics, local tours of layouts or prototype facilities, and model contests. Annual subscription to the Mid-Continent Region *Caboose Kibitzer* is included in your membership and runs concurrently with membership at the National level.

The Gateway Division is well represented on the regional and national levels of the NMRA. Its members actively promote the modeling hobby through local monthly meetings, this quarterly newsletter, an annual train meet in the fall, participation in area train shows and other events, and a comprehensive website. Annual subscription to the Gateway Division *RPO* is \$5, running from July 1 through June 30. Members who subscribe mid-year are given extended memberships. In addition to the quarterly newsletter, a member directory is published listing names, addresses, and information about individual modeling interests. New members also receive a Division membership pin.

Membership is open to anyone from the beginner to the most advanced modeler, of all ages, so that everyone can share questions and knowledge of the hobby. Visitors are welcome at the monthly Division meetings listed on our website, www.gatewaynmra.org

To join, visit our website and complete the form at <http://gatewaynmra.org/membership.htm>

Division Officers

Superintendent

Hank Kraichely
716 Reinke Road
Ballwin, Missouri 63021
636-394-5151
hkraichelyatsbcglobal.net

Assistant Superintendent

Bill Linson
16020 Kerryton Place Drive
Ballwin, Missouri 63021
636-220-6652
blinsonatcharter.net

Clerk (Secretary)

Don Ayres
761 Cedar Mill Drive
Belleville, Illinois 62221.
618-233-2621

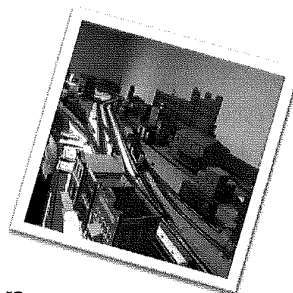
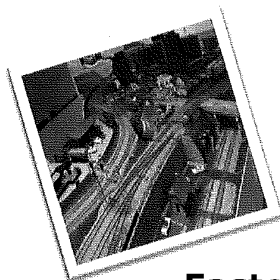
Paymaster (Treasurer)

Dave Lyon
284 Oakleigh Woods Drive
Ballwin, Missouri 63011
636-394-5996
jdlyonatswbell.net

Division Director

Phil Bonzon, MMR
7458 Kingsbury Blvd.
Saint Louis, Missouri 63130
314-727-0075
pbonzonataol.com





Eastern Iowa Division Operating Session Weekend April 5, 6, & 7, 2013

The Eastern Iowa Division of the NMRA is looking forward to hosting our first 2013 Operating Session Weekend. We will have some great operating sessions on a couple of great railroads located in eastern Iowa.

Weekend Activities Include:

- **Friday, April 5th** A "Meet and Greet" with evening layout tours
- **Saturday, April 6th** Choose from six different home layouts to operate on during two different operating session times throughout the day. Layouts are located in the Cedar Rapids, Iowa City & Coralville areas.
- **Saturday, April 6th** the Eastern Iowa Division will host an evening meal in Bertram, Iowa next to the Union Pacific mainline. The gathering will include two to three clinic presentations on model railroad operations. There will also be door-prize give-a-ways.
- **Sunday, April 7th** Choose from two different operating sessions on either the Hawkeye Model Railroad Club in Coralville, Iowa, or Mid-West Trains in Bettendorf, Iowa.

**Visit our website to register for the Eastern Iowa Division
2013 Op Session Weekend**

<https://sites.google.com/site/eid2013opsessionweekend/home>

Register early and mail in your payment to secure a spot as an operator, as space will be limited

