



Gateway Layout Tour
Bill Wehmeier's MKT –
One of four on December tour

RPO

Winter 2008: Volume 15, Number 4

The RPO is the official publication
of the Gateway Division
of the National Model Railroad Association

Editor:

Mike Thomas

Cover Photograph:

Mike Thomas

This Issue's Contributors:

Bill Levin

Venita Lake

Richard Lake

Bob Bousman

Richard Schumacher

Articles, photos and any other materials for publication are to be sent to the Editor. No payment can be made for publication of any materials. Regular issues are published quarterly: Spring, Summer, Fall, and Winter. Subscriptions to the RPO are available to members of the NMRA as a service provided by members of the Gateway Division. Send subscription applications and renewals to the Division Treasurer.

Any item may be reproduced by other NMRA publications, unless specifically restricted, as long as author and source credit is included. Advertising of interest to our membership is accepted for publication in the RPO. Contact the Editor or Treasurer for current rates and artwork size information. Please send submissions, suggestions, letters, and address corrections to:

Editor, The RPO

Gateway Division NMRA
3900 Shenandoah Avenue
Saint Louis, MO 63110-4016

Articles may be submitted as handwritten, typed, plain unformatted text on disk, or plain text via email to mathomas@speakeasy.net; photo submissions may be made as hi-res digital files, 35mm slides or negatives or as prints.

All content is Copyright © 2008 Gateway Division NMRA unless otherwise noted.

Visit our website at www.gatewaynmra.org

In This Issue

Superintendent's Desk	2
Don Taschner, MMR #403	3
Branson Express 2008	4
2008 MCoR Convention Registration	6
Notes on Operations.....	7
Gateway Central XIV Winner.....	10
WebStats	10
Layout Tour photos.....	11
Sn3 Symposium	17
Upcoming Events	18
Division Minutes	19
Officers & Membership Information	24

On the Cover

Bill Wehmeier's HO scale rendition of the Katy in the 1960s was just one of four layouts to be seen on the Gateway Division's quarterly layout tour, organized by Hank Kraichely.

Superintendent's Desk

by Bill Levin

As I depart the Superintendent position for the Gateway NMRA Division we can look back with pride that we tried several new ideas...some worked and some did not, but overall our successes will be remembered. I want to recognize all those that helped during the last year. Hank kicked off the quarterly members' layout tours that were well received and well attended. If you have not had a chance to participate in one of these, make a New Years Resolution that you will do so in 2008. Dave Lyon and Ron Gawedzinski did great jobs with the Treasury and Secretary duties. As

always, Jim Anderson represented us well at the Region level.

Of course there were others that helped, notably Mike Thomas who prepares this publication, Bob Boedges who chaired the Fall Meet, Brian Post who sold tables to vendors for the Fall Meet, Richard Schumacher who handled the Division website and Tim Stout who took over for Hank with merchandise sales. This year moving the Project Layout around was difficult and would not have happened if it were not for the efforts of Jim McIntosh and Lee Durham. I am sure that I have missed some names, but to all those that helped in any way, either by arranging and/or participating in our Division activities ... THANK YOU.

And as the new Gateway Division Officers take charge, I know we will continue to be active and viable. Hank Kraichely is Superintendent, Tim Stout is Assistant Superintendent, Dave Lyon is Treasurer and Ron Gawedzinski is Secretary. Jim Anderson continues at Regional Director. Make this the year you will be more active and come to meetings, do some modeling and get the most out of the hobby.

Look forward to see all of you at a future meeting.

Bill Levin
Retiring Superintendent

Don Taschner is Master Model Railroader #403

It is entirely appropriate that the Gateway Division's newest Master Model Railroader is our long-time achievement program chairman, Don Taschner.



Don & Doris Taschner

photo by Bob Bousman

Don's final two achievement awards were for Electrical Engineer and Civil Engineer. He was presented with his plaque and certificate at the Division's December meeting.



BRANSON EXPRESS 2008

MID-CONTINENT REGIONAL CONVENTION PREVIEW

The Branson Express 2008 pulls into Beautiful Branson, Missouri on Thursday night, May 15th for 4 days of great model railroading experiences.

VENUE

Branson, Missouri is located in the tri-lakes area of the Ozark Mountains, on the banks of Lake Taneycomo, 40 miles south of Springfield, Missouri. Lake Taneycomo is the premier trout fishing lake in the mid-west. Table Rock Lake is west of town. It has 850 miles of shore line and is the premier bass fishing lake in the mid-west. It is also a great lake for skiing, tubing or pleasure boating. Bull Shoals is the third of the tri-lakes, located east of Branson. Bull Shoals claim to fame is Crappie fishing and pleasure boating.

Branson, Missouri is also known as the live entertainment capitol of the USA. It has over 52,000 theater seats (more than Broadway) and approximately 52 shows are performed every night.

In addition to the lakes and shows, Branson is the home of the Branson Landing, Silver Dollar City, Show Boat Branson Belle, Bass Pro shops and many more family oriented recreational activities.

For more information on Branson, log onto: <http://www.explorebranson.com> or call 800-214-3661

CONVENTION AND TRAIN SHOW

STONE CASTLE (formerly SETTLE INN), 3050 Green Mountain Dr., 800-677-6906, NMRA group #5158, room rate is \$69.98 + tax.

Thursday evening, May 15th registration opens. The convention is Friday, May 16th and Saturday, May 17th. The train show will be held Saturday, May 17th and Sunday, May 18th. The awards banquet is Saturday night, May 17th.

REGISTRATION

FULL REGISTRATION allows you complete access to all convention activities. The Fare is **\$45.00 per person**. Extra-fare items are not included.

NON-NMRA MEMBER REGISTRATION allows you full access without joining the NMRA. The fare is **\$50.00 per person**. Extra-fare items are not included.

BANQUET

Fare is **\$25.00 each for NMRA members, their spouses or guests** and **\$30.00 per person for NON-NMRA attendees**.

TRAIN SHOW

Fare is **\$5.00 per day per person**. Children 12 and under are free when accompanied by a paid adult.

CHECK-IN

Registration/check-in will be in building #3 adjacent to the hotel check-in desk. The hospitality room (Avalon) is located in building #1. Registration and the hospitality room will be open Thursday, May 15th from 4:00pm until 8:00pm. On Friday, May 16th. Registration opens at 8:00am and closes at 8:00pm. The hospitality room moves to the Excalibur room in building #1 for the duration of the convention. At check-in you will receive a convention bag filled with local information from the Branson visitor's bureaus, maps to extra-fare items and convention tags. You will have the opportunity to purchase patches/pins and alter your itinerary at this time.

CLINICS

Friday, May 16th and Saturday, May 17th.

All clinics are open to convention registrants at no-charge except the "Make and Take" clinic conducted by Fran and Miles Hale MMR. That clinic will be limited to 26 people and the fare will be \$5.00. Sign up for this clinic when you register.

MODEL AND PHOTO CONTEST

Have all documents filled out in advance. Forms are available from your local AP chairman or the NMRA website. Entries will be accepted starting at **9:00am Friday, May 16th and the NMRA judging will take place at 2:00pm on Saturday, May 17th**

DOOR PRIZES

Two special prizes will be raffled off to convention registrants Saturday night at the awards banquet. Regular door prizes will be raffled off during the train show on Saturday and Sunday.

EXTRA-FARE ITEMS

Available to all registrants at special convention rates.

Convention attendees will be provided maps in their convention bag and are responsible for their own transportation to the sites.

- (1) **Missouri Pacific Caboose**. Tour is **Friday, May 16th from 1:00pm until 5:00pm** and free to all persons wearing a convention tag.
- (2) **Branson Scenic Railway** excursion trip. Train leaves station on **Friday, May 16th at 2:00pm**. Trip is approximately 2 hours. Cost is \$22.25 per person with convention tag. Sign up when you register and pay when you board the train.
- (3) Awards banquet **Saturday, May 17th 6:00pm until 10:00pm**. Cost is \$25.00 per person for NMRA members, their spouses or guests. \$30.00 per person for NON-NMRA members, their spouses or guests.

HOME LAYOUT TOUR

Saturday, May 17th. Tour is self guided. Maps will be provided in the convention bag.

PUBLIC TRAIN SHOW

Saturday, May 17th and Sunday, May 18th. Each vendor is required to pay a \$15.00 Branson City Vendor License fee and each table is \$15.00.

Admission is \$5.00 per person per day. Kids 12 and under are free with a paid adult.

BOARD OF DIRECTORS MEETING: Sunday, May 18th



Mid-Continent Regional Convention / BRANSON EXPRESS 2008
 Hosted by the Ozark Mountain Area
MAY 15-18, 2008 IN BRANSON, MO
STONE CASTLE (formerly Settle Inn)
 3050 Green Mountain Dr.
 800-677-6906 group # NMRA-5158
 Rate \$69.98 +tax

Activities planned for this year's meet include:

- Door Prizes:** special raffle for registrants only. Door prize raffle at train show
- Model & Photo Contests:** NMRA judging.
- Clinics:** A full slate of clinics covering many aspects of the hobby. If interested in giving a Clinic contact: Tom McMorran: k_t_mack@yahoo.com or 417-239-2776.
- Display Layout and Layout Tours:** In addition to the display layout at the meet, several local modelers will be opening their homes to layout tours Saturday afternoon. Layout tour maps will be available at registration.
- Excursion Train Trip:** Friday afternoon at 2:00pm on the Branson Scenic Railway.
- Tour a MOPAC Caboose:** Friday afternoon. Information will be available at registration.
- Swap Tables and Railroad Groups:** Approximately 60 tables for area dealers, local hobbyists and other railroad groups. For information on tables contact Tom McMorran at k_t_mack@yahoo.com or 417-239-2776.
- BRANSON, MO:** Live entertainment capitol of the U.S.A., with over 52 show venues. Plus Silver Dollar City, Show Boat Branson Belle, Branson Landing and three lakes for boating and fishing. There is something for every member of the family to do in Branson, so turn the trip to the convention into a family vacation. For information www.explorebranson.com or call 800-214-3661.

Mid Continent Regional Convention / Branson Express 2008 Registration Form			
Registration-NMRA Member	Number	\$45.00	
Registration Non NMRA Member	Number	\$50.00	
Banquet Registration MNRA Members		\$25.00	
Banquet Registration Non Members		\$30.00	
Vendors must have a Branson Vendor license	A one time Fee of \$15.00 Required	\$15.00	
Swap Tables \$15.00 each	Number of Table	\$15.00	
		Total Enclosed:	
Name _____ e-mail _____			
Address _____ phone _____			
City _____		State _____	Zip Code _____
Make Checks Payable to: "Branson Express 2008"			
Mail to: Tom McMorran, 730 Emerald Pointe Dr #433, Hollister, MO 65672			

Notes on Operations-- How Other Folks Do It

by Rick & Venita Lake

In early March, we left St. Louis with its chilly weather and our home plumbing problems to spend four busy days in the San Jose/San Francisco area operating on several very different model railroads as part of the second BayRails event. While we are both avid operations fans, we don't get enough opportunities to operate on different railroads at home and this was a chance to see what others are doing and to visit with old friends. Following are some of our observations on things we learned about providing a great operating session for regulars and especially for "boomers," or first-time guests. Many of them have been or will be incorporated in our own

home layout and forthcoming operating sessions. Plan an introductory session (about a half hour) to explain the general scheme of the railroad and its methods of operation to first-time guests. This should include information on the railroad(s), whether prototypical or freelanced, the kinds of traffic, available jobs, the physical operating system and use of controllers (also called cabs or throttles), use of switch lists or car cards, dispatching, time tables, train orders, and anything else unique to the layout. The BayRails website provided layout descriptions with much of this information so that participants could rank preferred layouts when they registered. Most had links to owner's websites with photos and after layout assignments were determined by the committee, some owners sent additional advance information to their assigned



The Silicon Valley dispatcher's desk and magnetic board with a linear schematic and, on the left, a track diagram of each level

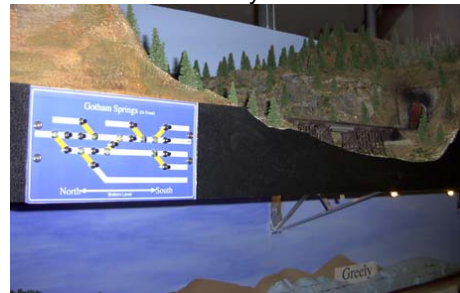
Venita Lake photo

crews. Bill Kaufman even gave us a 15-minute PowerPoint presentation on the State Belt Railroad before we started! (His article on modeling the State Belt appears in the April 2007 issue of *Railroad Model Craftsman*.) Identify, label, point out, and print out cities, towns, and other important locations on the layout. A walk-around tour helps beginners as well. A schematic drawing and a linear diagram are both helpful. One layout simply laminated a list of the towns in order to a small clipboard. Another small layout put the basic track plan on a clipboard. This helps to know how far ahead your next assignment, drop off or pick up, is. The Silicon Valley Line, a very large freelanced club layout, is not restricted by actual place names, so they have opted to name their towns in alphabetical order along the route, starting with Bakersfield at the south end yards and ending with Windsor at the north. Provide basic instructions for each job: passenger trains, over-the-road freights, yard switching, dispatcher. With experienced operators, it may be best to simply assign whichever train comes up next. Regardless, instructions that give the train number, nickname if there is one, engine and caboose numbers, engine DCC address, and a brief summary of the assigned job will start the operator off with confidence.

Give some consideration to how much the operator will have to juggle and where he or she will be working. Several layout owners provided shop aprons with pockets in addition to the usual boxes for pencils and uncoupling picks. If you are using radios and controllers, clip boards, switch lists or car cards, special landing surfaces are important or your precious trackwork and scenery may be the only option.

Pockets on the fascia for controllers are very useful. Some owners use pieces of Velcro on the fascia and the back of controllers and clip boards. One very elaborate layout had just acquired multiple button telephones to contact the dispatcher, a neat addition, but had not had time to install all of them within easy reach. Since the phones were on the floor, track warrants dictated by the dispatcher were written down while sitting or squatting on the floor.

Use the fascia for providing information to visitors and operators as well as locating switch controls and indicator lights. The Silicon Valley uses the fascia on the upper deck to provide information and controls for the lower deck. It is closer to eye level and



The Silicon Valley's upper deck fascia board has place names, north/south direction indicators, and a track schematic with lighted turnout controls
Venita Lake photo

buttons or toggles are less likely to be accidentally hit. Color coding, green for lower deck and purple for upper deck, and up and down arrows helped in identification. Directional arrows for north/south or east/west serve to remind operators of which direction they are headed, important in determining who has the right of way. On single deck layouts, powered turnout throws were recessed in "portholes" on the fascia. Elsewhere, boxes for car cards were installed into or under the bottom of the

fascia so that they did not project into the aisles.

Use switch lists to simplify car movements for the engineer/conductor, especially for first-timers. Of the five layouts we visited, none used car cards for the operators. Some used switch lists generated by computer programs. Dave Parks' Western Maryland used switch lists plus a dispatcher who issued track warrants allowing the train to proceed to a particular location on the line. Some were more concerned about reporting location to the dispatcher than others, and as dispatcher on one layout, Rick was especially interested in knowing where all 17 operators were. That layout used radios.

On the three smaller layouts we worked, some of the jobs were more isolated. Venita worked a yard on Jim Diaz's railroad for most of the morning with almost no contact with the other three operators. Jim Burgess's Yosemite Valley uses switch lists and time tables with bold face type indicating train meets like the prototype railroads do. It

operates on an 8-to-1 fast clock with the time displayed on the NCE ProCab. Bill Kaufman has taken a cue from Chuck Hitchcock and keeps his car cards at the clerk's desk, writing up switch lists for the engineers/conductors as cars are delivered from various destinations including the car float. Even though these three layouts had only four operators plus the owners, they were very enjoyable. You don't need a huge layout to be able to have good operating sessions.

While many of these notes describe things that modelers in the Gateway Division are using, it was great fun to observe others. It certainly gave each of us some ideas for improving future operating sessions on the EI and EI. Both of us feel much more confident about dispatching our own railroad after BayRails and have a number of ideas to adapt/implement to make EI and EI operations more fun for everyone.

Oh, and one more thing—they had step stools or platforms where needed.



Jack Burgess's Yosemite Valley's double deck fascias show place names and local switch controls and provide controller plug-ins and holders plus phones to contact the dispatcher
Venita Lake photo

Gateway Central XIV Project Layout Winner



Jerry Williamson of Robinson, Illinois had his name drawn in November as the winner of the Division's fourteenth project layout, the Gateway Central XIV. Jerry is shown here unpacking his winnings with deliveryman Ron Kraus. In addition to the layout itself, Jerry won a locomotive, rolling stock, and Atlas Quantum Engineer sound control system.

Website Statistics

reported by Richard Schumacher

Report for www.gatewaynmra.org for the month of December 2007

Successful Hits For Entire Site, 3,207,420

Page Views, 152,005

Average Per Day, 4,903

Visits, 75,259

Average Per Day, 2,427

Average Number of Visitors per day on Weekdays, 2,440

Average Number of Visitors for the entire Weekend, 4,802

International Visits, 9.17%

Bandwidth: Kbytes Transferred, 27,309,898 Kbytes

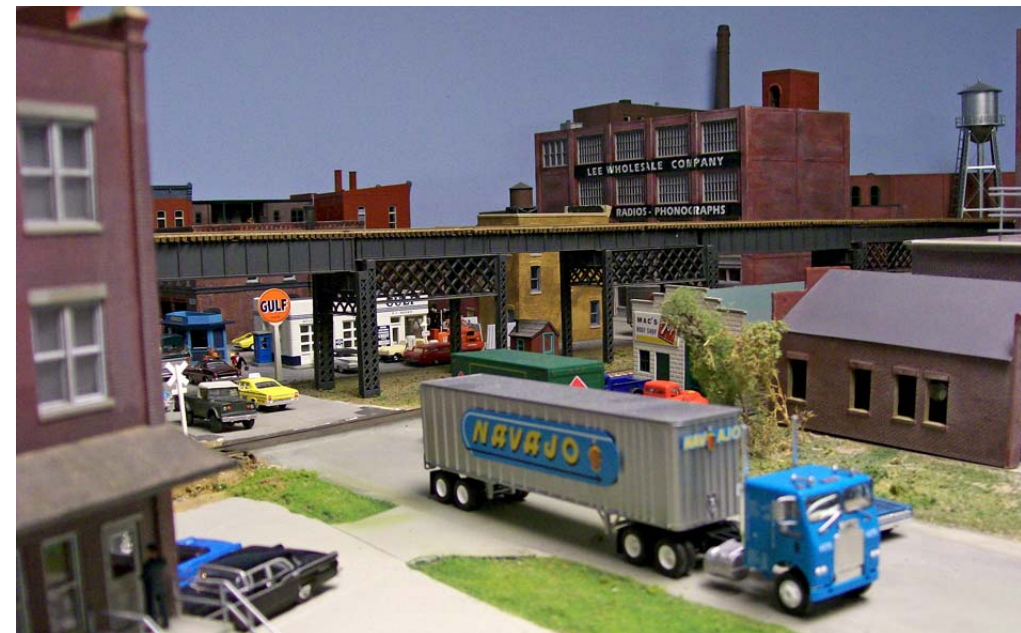
Quarterly Gateway Division Layout Tour

text and photos by Mike Thomas

It's always fun to see what other modelers are up to, and the best ways of doing that is by going and seeing their layouts. It can be especially eye-opening to visit a layout you've never seen before, or one that's had major improvements made since last you were there. Usually we have to wait for a once-a-year show like the Division's Fall Meet to get invited into a new basement, but thanks to a good deal of effort by Hank Kraichely, we've had our opportunities to see others' pikes quadrupled this year. This latest edition of the Gateway Division quarterly layout tour took place on Saturday morning, December 1, and

took us to St. Charles County. It was dubbed the *Fallen Flags Tour* because the four layouts modeled either roads that have been merged into oblivion, or were free-lanced roads based on long-gone lines. We got to inspect Herb Koenig's *Cordite & Flat River*, Bill Wehmeier's *Missouri-Kansas-Texas*, John Russell's *Rock Island*, and Bob Johnson's *Pseudo Soo Line*. There was some amazing and inspiring modeling to be seen on this tour.

The Division's thanks go to all four modelers for opening up their layouts to us!



Bill Wehmeier's Katy (also featured on the cover) runs through a number of dense street scenes.



Three more views of Bill's layout.
 Top left: the Katy roundhouse
 Left: REA loading dock
 Above: Switching



Below: Boxcars spotted at Prentice Manufacturing ("The World's Best Logging Equipment") on Bob Johnson's Pseudo Soo Line. Bob's layout is widely known because of his monthly operating sessions.



Pseudo Soo business car *Prudence* takes a spin on the turntable.

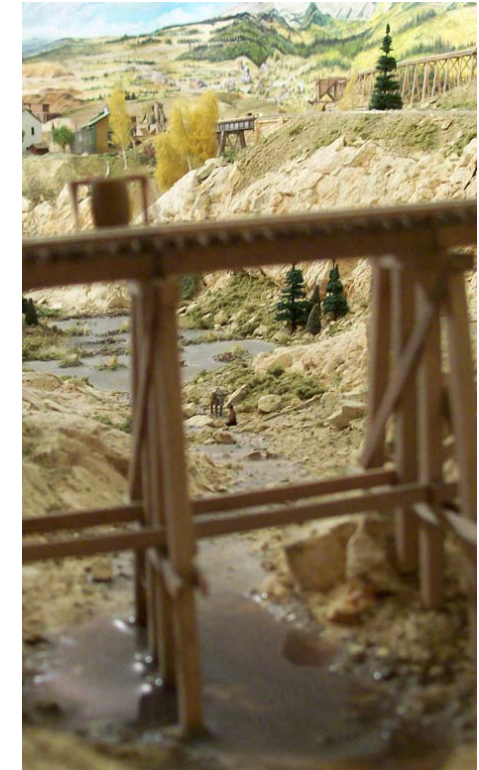


The industries of central Wisconsin served by the Pseudo Soo look a lot like the factories and warehouses found in Saint Louis.



There's always lots of switching to be done on the Pseudo Soo.

As soon as you walk into Herb Koenig's layout room you're surrounded by scenes of depth and detail. Here a prospector pans for gold just upstream from the Cordite & Flat River trestle.



Towns are small in this part of Colorado, but Herb packs them full of detail.





The pause that refreshes – taking on water from a well-weathered tank.



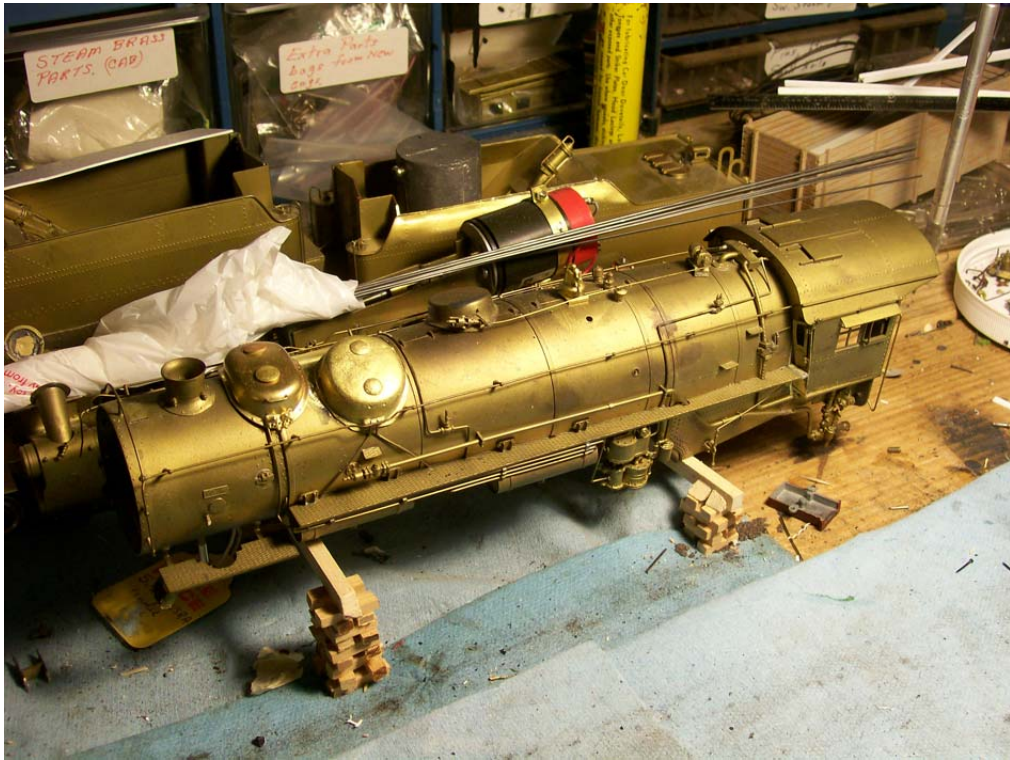
John hand laid much of the track on the layout. Rail in the yards is code 100, with code 125 on the mainline. Engine service facilities are elaborately detailed.



Left: Herb explains some of his modeling techniques to visitors on the tour. Surrounding them is Herb's floor-to-ceiling scenery in an exceptionally well finished and lit layout room.

John Russell really knows the Rock Island. A retired Rock employee, he has recreated a portion of the line around Hot Springs, circa 1950, in O scale. The detail possible at 1:48 is evident in both the structures and the rolling stock.





John rebuilds brass locomotives when necessary to match his prototype.



Passenger operations were still the lifeline of most towns and small cities in the late '40s and early '50s



It wouldn't be right to end a layout tour – or a train – with anything but a caboose.

23rd Sn3 Symposium

St. Louis, MO
Feb 14 - 17, 2008



**“Join us in St. Louis
for Narrow Gauge
Adventures”**

23 Layouts, 10 are Sn3
Clinics
Model & Photo Contests
Dealers - Manufacturers
Modular Layouts
Pre and Post Symposium Tours

Registration \$45
(Special \$25 single day pass only
available at registration desk.)

St. Louis Airport Marriott
10700 Pear Tree Lane
St. Louis, MO 63134
314-423-9700
Toll-Free: 1-877-264-8771
Mention “Sn3 Symposium” for
special \$79/night rate
(Up to 4 persons per room)

Make check payable to:
Peter Smith - Registrar
4317 Mahogany Lane
Belleville, IL 62226

Additional Information: Jeff Boeck, Chairman - 636-928-9969

www.sn3.org/2008symposium

Upcoming Events

Gary's Switching List

Compiled by Gary Hemmingway for the Mid-Continent Region NMRA

The Switching List contains all known Mid-Continent Region, NMRA, train shows and Division meetings. It also lists all known club shows and swap meets in the Mid-Continent Region (IA, IL, MO, AR, NE, KS, OK). To list your event, send it to: email garyonho@cox.net, or Gary Hemmingway, 3201 SW Stone Ave., Topeka, KS 66614. To subscribe, or unsubscribe, to The Switching List send an email to the above link. Look for us on the MCoR web site: www.mcor-nmra.org.

Train Shows & Meets:

February 9, 2008 -- The Dupo Show: 18th Year, Sponsored by Reynolds Railways & Dupo Community High School, Dupo High Gym, 600 Admiral Trost Drive, Dupo, IL (I-255 to Exit 9; 7 minutes from the Arch in Downtown St. Louis, MO; hotel accommodations 7 to 10 minutes away in St. Louis South County, Downtown St. Louis, or Waterloo, IL.) 10 am - 3 pm; Adults \$3.00; 12 & under FREE with adult, 40-plus vendors, Lionel, Flyer, HO, N, etc., including operating layouts; Smoke-free environment. 8 ft. tables, \$12 each; tables usually sell out by January 1st; electric \$5.00; payment payable to Reynolds Railways must accompany registration; mail to Reynolds Railways, 212 North Main Street, Dupo, IL 62239; Seller set-up 7 a.m.; ROTC carry-in/our service. Info: 618-286-3399. FEB 9-10, 2008 -- WICHITA TRAIN SHOW & SWAP MEET, Cessna Activity Center 2744 George Washington Blvd., Wichita, KS, Sat: 9 - 5, Sun: 12 Noon - 4, Sponsored by Chisholm Trail Div. & Engine House Hobbies, Registration;

\$6.00 both days. Advance table registration; before 12/ 31/07 take 10% off. Six foot tables are \$20.00 each, eight foot tables are \$25.00 each. Mail registration to: 603 Chestnut, Halstead, KS. 67056-2302, Email; aylward1@cox.net .

FEB 23, 2008-LAWRENCE MODEL RAILROADERS ANNUAL TRAIN SHOW, Douglas County Fairgrounds, 2120 Harper St., Building 20, Lawrence, KS; for information contact Jim Turner, 255 N. Michigan # 5-25, Lawrence Ks, 66044, 785-841-6256. His email address is jimforegolf@hotmail.com, more information in the future.

FEB 23, 2008-- SUGAR CREEK MODEL RAILROAD & HISTORICAL SOCIETY, INC.,

FIFTH ANNUAL GREAT NWA MODEL TRAIN & HISTORICAL MEMORABILIA SHOW, Clarion Hotel and Convention Center 211SE Walton Blvd Bentonville, AR 72712, 9:00 AM - 4:00 PM, Adm: Adults \$5:00 and Children 12 and under FREE; Large number of vendors, operating layouts, model contest, clinics, door prizes, DCC clinic by Loy of Loy Toys, Very Buffet. Don't forget to ask the Hotel for your discounted room rate, for the show; Grand Prize Drawing is for a set of Amtrak tickets on the Texas Eagle; Contact Information: Bill Wright, 6 Allison Lane, Bella Vista, AR 72715, (HM) 479 - 855 -3250, (Cell) 479 - 426 -1544 E-mail: w5mth73@cox.net

MAR 15, 2008 -- BOEING EMPLOYEES RAILROAD CLUB-ST. LOUIS RAILROAD SWAP MEET, Greensfelder Recreation Complex at Queeny Park, 550 Wiedman Rd., St. Louis, MO, 10a.m. - 3 p.m., Adm: \$3.00 children under 12 free with paid adult, Tables (30" x 96") \$15.00 each, payment must accompany registration, seller setup 8 a.m., Info: call Wayne Schimmel after 6 p.m. Central Time, 636-668-6313 or 733 Hwy Y,

Winfield, MO 63389-2206, wwhtehrse@aol.com, make checks payable to Boeing Employees' Railroad Club-St. Louis.

MAY 15-18, 2008 -- MID-CONTINENT REGION CONVENTION, Settle Inn & Resort, Branson, MO, registration \$40, banquet \$25; Hotel rate 69.98 per night, Ph 1-800-677-6906 and refer to Group Number NMRA-5158; Info: Jim Dimatteo, Convention Chair, 190 Western Ave., Branson, MO

JUL 23 -- 26, 2008 -- UNION PACIFIC HISTORICAL SOCIETY CONVENTION, Capital Plaza Hotel & Maner Conference Center, Topeka, KS, Info: Larry Tiffany ltiffany@cox.net, 2140 NW 53rd Terr., Topeka, KS 66618

AUG 2, 2008 -- TURKEY CREEK DIV TRAIN SHOW, Lenexa Community Center, 13420 Oak, Lenexa (Pflumm & Santa Fe Dr), KS, Clinics, Model & Photo Contests, Door Prizes, Display Layouts & Layout Tours, Swap Tables & Layout groups, Food & Refreshment, Info: Robert Hollowell, 2013 SE Stratford, Blue Springs, MO 64014-4047.

Division Directors, Train Show Chairs, or Club Show Chairs: ANY MORE EVENTS IN 2007 or 2008? Get your information to Gary at any of the above addresses. Let's get the word out about your next event! The Switching List is a service of Mid-Continent Region, NMRA.

Gateway Division Clinicians Wanted

We always need clinics for upcoming meetings. If you know something other people don't then you're qualified to conduct a clinic. And if you don't think you can fill an hour, we can pair you up with another short clinic for the evening. We especially need more hands-on how-to modeling workshops and more in-depth prototype clinics.

Call Tim Stout at 217-272-4159 or email at tstout@guthlighting.com

Division Minutes

Recorded by Ron Gawedzinski, Clerk

Gateway Division NMRA Meeting Minutes for October 15, 2007

Clinic: Superintendent Bill Levin was on vacation. Acting Superintendent Hank Kraichely called the meeting to order at 7:09 PM. Hank introduced Pete Smith as the clinician, who gave a clinic on "Tips On How To Build Laser Kit Structures".

Pete explained that, unlike plastic kits, laser kits require some special steps to follow in order to build a fine structure. For example, dress up (paint) the burnt (cut) edge of the wooden pieces; read the kit instructions carefully; keep track of the front and rear sides of the wooden pieces by marking them; paint both sides of the wooden pieces to minimize warping. Through the use of fine slide pictures, Pete showed the step-by-step construction of an old style gas service station. Thanks, Pete, for a very informative clinic.

BUSINESS MEETING

Acting Superintendent Hank Kraichely called the business meeting to order at 8:06 pm. There were 23 members and no guests present.

Visitors:

There were no visitors.

Minutes of the September 17, 2007 Meeting:

Copies of the minutes of the September 17, 2007, meeting were distributed. Dick Wegner stated, under Director's Report, fourth line, the date "October 1" should be "October 31". The minutes were accepted as amended.

Treasurer's Report:

David Lyon, Treasurer, distributed printed copies of the Treasurer's Report for the period September 17 through October 14, 2007. The balance in all funds as of October 14, 2007, was \$26,452.72. There were no questions and the report was accepted as presented.

Monthly Meeting Clinician Report:

Hank Kraichely reported that next month the Division's Christmas Party would be on Monday, November 19, 2007, at 7:00 PM at Trinity Lutheran Church, Ballwin, Missouri. There is a sign-up sheet at the front table for members to say they are coming, along with what type of food you want to bring. In December, the clinic would be replaced with a swap meet at the VFW Hall, O'Fallon, Illinois, location. (Members who volunteer to present clinics are always needed and are welcome. The clinics could be on a prototype RR, your RR, some experiences you have or a modeling project.)

Gateway Layout Tour Schedule:

Hank Kraichely reported there would be a layout tour in the St. Charles area on Saturday, December 1, 2007, from 9:00 AM thru 1:00 PM. There should be five layouts available for viewing.

Fall Meet, November 3, 2007:

Bob Boedges reported we are sold out on vendor tables, thanks to Brian Post's work. As a result, financial success of the Fall Meet is fairly assured. The Model Contest is set up, with Don Taschner and Brian Post involved. Bob has mailed out attendance prizes donation letters to 59 manufacturers. Tables will be provided from the Trinity Lutheran Church as well as ordered from the outside. Flyers advertising our Fall Meet are available for members to distribute to hobby shops, supermarkets, churches, anywhere. To publicize our Fall Meet, Bob will deliver press releases to local newspapers. The clinics are set, with Dave Roeder, John Schindler, Gary Gross and Don Gathright giving the clinics.

Dale Bitsch is putting together the Boy Scouts Railroad Merit Badge program project. He needs volunteers to do 30-minute presentations on subjects such as Prototype Railroad signal systems, Railroad careers, Passenger Trains and Reading a Timetable, and Scales and Gauges. If members know anything about these subjects please see and or contact Dale.

Home layout tours in the afternoon are set. Five modular club layouts were originally scheduled to come but just recently two clubs backed out. So

now we have a fair amount of vacant space to fill up. If any member belongs to a club or knows of a club please check with the club to see if they would be interested in showing at our Fall Meet. On Friday afternoon at 3:00 PM, November 2, at the Trinity Lutheran Church, we need volunteers to help set up tables and chairs for the Fall Meet on Saturday. Please come and help out.

Merchandise Report:

Tim Stout reported all N scale and HO scale loading dock kits have been sold. 33" and 36" HO wheel sets are available. There are some N wheel sets available. Also, assorted track gauge sets are available except for HO.

RPO Report:

Mike Thomas reported the latest RPO, the 2007 Membership Directory and the 2007 Ballot for the election of Officers for the Gateway Division are available for pick-up by members tonight before they are put in the mail. The deadline for submission of articles and pictures for the next RPO is January 1, 2008.

Director's Report:

Jim Anderson had no report.

Achievement Program (AP) Awards Report:

Don Taschner was not present. No report.

Announcements:

Ron Gawedzinski mentioned the St. Louis Chapter NRHS is having a trip to the St. Louis, Iron Mountain & Southern Railway, Jackson, Missouri, this Saturday, October 20. Everyone is welcome. We'll have our own diesel-powered charter train for the 90-minute, 10-mile trip. Afterwards, we'll visit a scenic covered bridge and mill at Burfordville and stop for lunch at a local smorgasbord restaurant. The trip will start at the commuter parking lot at Reavis Barracks Road and I-55 in South St. Louis County. The charter bus will leave the commuter lot at 7:00 AM and we should be back around 4:00 PM. Cost for the trip is \$45 per person and includes charter bus transportation and charter train fare. Reservations are on a first-come, first served basis. Contact Rick Sprung, Trip Director, at 314-842-5980 or e-mail at sprung@att.net. Make checks payable to St. Louis Chapter NRHS.

Ron Gawedzinski also mentioned the St. Louis Chapter NRHS is sponsoring a Christmas Train trip to Chicago, Illinois, on Saturday, December 8, 2007. It's a one-day Holiday Season trip to Chicago. Here's your chance to view the Christmas window displays and decorations and even get in some Christmas shopping. We will depart St. Louis at 6:35 AM on the private coach Golden Sand, a 1950 built car from the golden age of stream liners. You'll be served a continental breakfast enroute. After our 12:15 PM arrival in Chicago you'll have time to stroll, shop and dine in the Windy City before our 5:15 PM departure from Union Station for St. Louis. Enjoy complimentary coffee and soft drinks or purchase snacks from the Amtrak Café car as we travel across Illinois for our 10:45 PM arrival in St. Louis. Fare is \$75 per person and includes continental breakfast, coffee, juice and soft drinks. Contact Rick Sprung, Trip Director, at 314-842-5980 or e-mail at sprung@att.net.

Project Layout XIV (14):

Hank Kraichely reported the layout did not go to the Mississippi Valley N Scalers show (Kirkwood Community Center) on Saturday and Sunday, October 13 – 14, because the width of the layout was larger than the inside width of the transporting vehicles. Also, the layout would not be going to Mid-Rivers Mall on Saturday, October 27, for two reasons: first, the width problem of the transporting vehicles; and, second, the showing at the malls has not been successfully financially. The last time our layout will be shown is at our Fall Meet on Saturday, November 3. Bob Boedges had nothing to add to the report.

OLD BUSINESS:

Donated N Scale Layout -- Don Ayres reported he has available a printed copy of the inventory of the N Scale items salvaged from the donated layout. He will send a copy to Bill Levin this week.

Program For Young Model Railroaders -- Brian Post said he is still working on the event he will host in the future for model railroaders under the age of 17.

Project Layout XV (15) -- Brian asked the question if the Division is going to build a project

layout in 2008? Hank Kraichely answered by saying it is a matter for the Executive Committee to decide upon.

NEW BUSINESS: None.

50/50:

There was \$35.00 collected for the 50/50 drawing and Dick Wegner won \$18.00 in the drawing.

Adjournment:

A member moved to adjourn the meeting, seconded by another member and approved at 8:46 PM.

The next meeting, our Christmas Party, is November 19, 2007, 7:00 PM, Trinity Lutheran Church, Ballwin, Missouri.

Respectfully Submitted,

Ron W. Gawedzinski, Clerk

Gateway Division Meeting Minutes for Dec. 17, 2007

Clinic: There was no clinic. Instead, the Membership Swap Meet was held following the business meeting.

BUSINESS MEETING

Superintendent Bill Levin called the business meeting to order at 7:10 pm. There were 18 members and four guests present.

Visitors:

Doris Taschner, Leland Walker, Mark Rhoads and Christine Walker were our guests. The membership welcomes all of you.

Minutes of the October 15, 2007 Meeting:

Copies of the minutes of the October 15, 2007, meeting were distributed. The minutes were accepted as presented. There were no minutes for the November 19 meeting as that was our Annual Christmas Party.

Treasurer's Report:

David Lyon, Treasurer, distributed printed copies of the Treasurer's Report for the period November 19 through December 16, 2007. The balance in all funds as of December 16, 2007, was \$26,380.24. There were no questions and the report was accepted as presented. David also reported on the Fall Meet financial results. Estimated net income will be around \$800 as all

bills are not in. Estimated total attendance was 290.

Merchandise Report:

Tim Stout reported 33" and 36" HO wheel sets are available. There are some N wheel sets available.

RPO Report:

Mike Thomas reported the deadline for submission of articles and pictures for the next RPO is January 1, 2008.

Director's Report:

Jim Anderson reported the MCOR Director's meeting would be on January 5, 2008. Our Division might be asked to host a Regional event in the near future.

Achievement Program (AP) Awards Report:

Don Taschner reported there were 58 entries at the Fall Meet. There were 12 AP awards given out. Venita Lake received one for Structures, Dave Roeder received one for Motive Power and one for Cars and John Carty received one for Motive Power, four for Cars and four for Structures. Don Taschner sent in his Engineer for Civil and has received his Engineer Certificate for Electric. Don also reported he has received his Master Model Railroader Award. Dave Roeder presented Don with an NMRA Master Model Railroader (MMR #403) Award and the NMRA Special MMR Plaque. The membership gave Don a round of applause.

Monthly Meeting Clinician Report: No report.

Announcements: None.

Project Layout XIV (14): The layout was won by a family in the Belleville, Illinois, area.

OLD BUSINESS:

Fall Meet, November 3, 2007: Hank Kraichely reported the Fall Meet was a success. A number of the dealers were happy. The only disappointing thing was two of the modular layouts did not show up. The home layout tour went fine.

Gateway Layout Tour Schedule: Bill Levin reported the layout tour in the St. Charles area was enjoyed by all.

Member Phone Call Survey – Bill Levin said he is still working on the Member Phone Call Survey. He will have a report at the January 2008 meeting on the results.

NEW BUSINESS:

Report Of Election Committee -- Mike Thomas reported on the results of the 2008 Election of Officers: Superintendent -- Hank Kraichely, Assistant Superintendent – Tim Stout, Treasurer – Dave Lyon and Secretary – Ron Gawedzinski. The membership gave the Officers a round of applause. A motion to destroy the ballots was made by Mike and seconded by Richard Lake. The motion passed.

Disposition Of Award Plaques -- Richard Lake commented we have plaques that have been awarded to members at the Fall Meets over the years and they are full of the winner's names. Richard's proposal is to recycle the existing plaques to place the new winners names on them. Discussion followed. Hank Kraichely stated this would be an item for the new Officers to discuss. Bill Levin concurred.

50/50: There was \$26.00 collected for the 50/50 drawing and Mike Thomas won \$13.00 in the drawing.

Adjournment: Dick Wegner moved to adjourn the meeting, seconded by Gregor Moe and approved at 7:30 PM.

The next meeting is January 21, 2008, 7:00 PM, Trinity Lutheran Church, Ballwin, Missouri.

Respectfully Submitted,

Ron W. Gawedzinski, Clerk

Director's Report

By Jim Anderson

Gateway Division Director's Report Submitted to the January 2008 MCoR Board of Directors Meeting

I. General Comments

The Division continues to meet on a rotating basis between the VFW Hall in O'Fallon, IL and Trinity Church in Chesterfield, MO. Average monthly attendance continues to hold in the 30-50 range. Meeting announcements are communicated by postcards to members who have paid the \$3/year subscription fees or via e-mail to members who prefer this method of communication. Meeting info is also posted on our Gateway website which is www.gatewaynmra.org.

II. Division Monthly Meetings/Clinics

(July through December 2007)

-July: "Programming Decoders Using Free JMRI Software"(Brian Post/Bill Levin)

-August: "Scenery Techniques On Water And Structures"(Ralph Miller)

-September: "Operating Session On Hank Kraichely's Layout"(Hank Kraichely)

-October: "Building Laser Kit Structures"(Peter Smith)

-November: "Annual Gateway Christmas Party With Presentation On Travel Trip To China"(Bill Levin)

-December: "Gateway Division Swap Meet"

III. Fund Raisers

The Gateway Division XIV Project Layout was exhibited in area train shows and in a selection of shopping malls. The layout was awarded at the Gateway Division Fall Meet on 11/03 to a winner in mid-Illinois. Overall the finances were essentially "break even" but the Division feels that it does help promote the hobby.

The Division continues to sell attractively priced HO and N scale wheel sets.

The Division Fall Meet was held on Saturday 11/03 at Trinity Church. Dealer attendance was very good. There were 268 paid admissions along with approximately 35 children under the age of 12 who were admitted admission free.

IV. AP Awards Info

Merit Awards:

-Structures: Venita Lake

-Motive Power/Cars(2 awards): Dave Roeder

-Motive Power/4 For Cars/4 For Structures(9 awards): John Carty

AP Certificates:

-Engineered Civil/Engineered Electric(2 awards): Don Taschner

-MMR #403: Don Taschner

V. Membership Activity

The Division continues to be challenged in terms of retaining members and adding new members. The membership nucleus remains essentially the same. Going into December membership info furnished to me by Rich Napper included the following: 158 CK subscribers, 242 active NMRA members, 420 inactive NMRA members for a total of 664 members in Gateway Division

territory. Hank Kraichely, Gateway's Membership Chairman, reported that NMRA data showed 257 NMRA members in Division 10 territory with 53 being Life Members. In addition there are 84 Gateway members who are current with their \$3/year subscription fees.

The quarterly layout tours on specific weekend dates to visit layouts of Division members have gone very well. Four sessions have taken place with very good attendance.

Mike Thomas continues to do an excellent job as Editor of our publication the RPO. Mike is always looking for articles for publication. Anyone in MCOR territory or on the MCOR BOD is more than welcome to submit articles for publication in future issues of the RPO.

The Gateway website, managed by Richard Schumacher, continues to attract attention. Stats from November include the following:

-Hits for entire site: 2,846,947

-Page views about 3,334/day

-Visits about 2,359/day

-Search engine referrals: 14,572

VI. Officers/Department Chairs For 2008

Superintendent: Hank Kraichely
(hkraichely@sbcglobal.net)

Assistant Superintendent: Tim Stout
(tstout@guthlighting.com)

Division Director: Jim Anderson
(andersjd@swbell.net)

Paymaster(Treasurer): Dave Lyon
(jdlyon@swbell.net)

Clerk(Secretary): Ron Gawedzinski
(rwgawed@yahoo.com)

Membership Chairman: Hank Kraichely

AP Chairman: Don Taschner

RPO Editor: Mike Thomas

Gateway Website Manager: Richard Schumacher

Fall Meet Chairman: Bob Boedges

Jim Anderson, Gateway Division Director

December 17,2007

NMRA MCoR Region & Gateway Division

The National Model Railroad Association (NMRA) is a world-wide organization dedicated to all aspects of model railroading. In order to bring the most benefit to its members, the association is subdivided into Regions, and each Region has a number of local Divisions. National dues are \$48 per year, and all members of the NMRA are automatically members of the Region and Division in which they live. The Gateway Division is part of the Mid-Continent Region, which represents Missouri, Kansas, Arkansas, Oklahoma, Nebraska, and parts of Iowa and Illinois.

The Mid-Continent Region publishes a quarterly bulletin, The *Caboose Kibitzer*, and holds an annual convention meeting that usually includes modeling clinics, local tours of layouts or prototype facilities, and model contests. Annual subscription to the Mid-Continent Region *Caboose Kibitzer* is \$12 and runs concurrently with membership at the National level.

The Gateway Division is well represented on the regional and national levels of the NMRA. Its members actively promote the modeling hobby through local monthly meetings, this quarterly newsletter, an annual train meet in the fall, participation in area train shows and other events, and a comprehensive website. Annual subscription to the Gateway Division *RPO* is \$3, running from July 1 through June 30. Members who subscribe mid-year are given extended memberships. In addition to the quarterly newsletter, a member directory is published listing names, addresses, and information about individual modeling interests. New members also receive a Division membership pin.

Membership is open to anyone from the beginner to the most advanced modeler, of all ages, so that everyone can share questions and knowledge of the hobby. Visitors are welcome at the monthly Division meetings listed on our website, www.gatewaynmra.org

How to Join

Visit our website, complete the form at <http://gatewaynmra.org/membership.htm>

Division Officers

Superintendent

Hank Kraichely

Assistant Superintendent

Tim Stout

Clerk (Secretary)

Ron Gawedzinski

Paymaster (Treasurer)

Dave Lyon

Division Director

Jim Anderson

