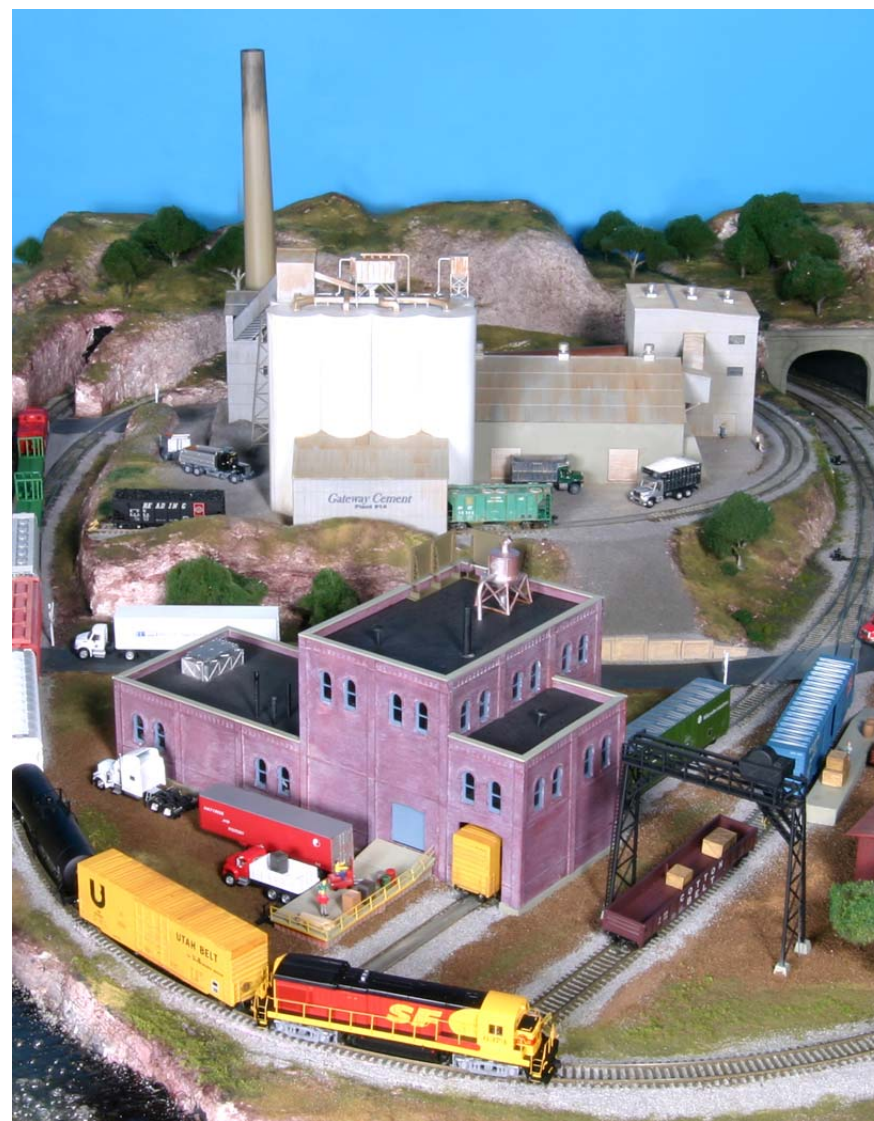


Official Publication of the Gateway Division NMRA



The Gateway Central XIV Project Layout

RPO

Autumn 2007: Volume 15, Number 3

The RPO is the official publication
of the Gateway Division
of the National Model Railroad Association

Editor:

Mike Thomas

Cover Photograph:

Richard Schumacher

This Issue's Contributors:

Pete Smith, MMR

Dale DeWitt

Richard Schumacher

Dave Roeder, MMR

Mike Thomas

Articles, photos and any other materials for publication are to be sent to the Editor. No payment can be made for publication of any materials. Regular issues are published quarterly: Spring, Summer, Fall, and Winter. Subscriptions to the RPO are available to members of the NMRA as a service provided by members of the Gateway Division. Send subscription applications and renewals to the Division Treasurer.

Any item may be reproduced by other NMRA publications, unless specifically restricted, as long as author and source credit is included. Advertising of interest to our membership is accepted for publication in the RPO. Contact the Editor or Treasurer for current rates and artwork size information. Please send submissions, suggestions, letters, and address corrections to:

Editor, The RPO
Gateway Division NMRA
3900 Shenandoah Avenue
Saint Louis, MO 63110-4016

Articles may be submitted as handwritten, typed, plain unformatted text on disk, or plain text via email to mathomas@speakeasy.net; photo submissions may be made as hi-res digital files, 35mm slides or negatives or as prints.

All content is Copyright © 2007 Gateway Division NMRA unless otherwise noted.

Visit our website at www.gatewaynmra.org

In This Issue

Superintendent's Desk	2
100% NMRA Clubs	3
Craig Brown	4
2008 MCoR Convention Registration	5
2007 Fall Meet Announcement	6
Gateway Central XIV Photos	7
MCoR Convention Review	14
Upcoming Events	15
Division Minutes	17
Officers & Membership Information24

On the Cover

An overview of the Division's fourteenth project layout, the HO scale *Gateway Central XIV*. Bob Boedges, Mike Satke, and crew did the modeling, and Rich Schumacher took the cover photo.

Superintendent's Desk

by Bill Levin

Fall is upon us and outdoor activities will not longer have priority as cooler weather takes hold so we all have more time for model railroading. The Fall Meet is coming up in November and promises to be one of the best and largest that we have ever had in the Gateway Division...we are taking more space so there is more room for layouts, vendors, and of course great clinics. So make sure you set aside some time on November 3rd to join friends and fellow model railroaders at the fantastic event.

This RPO is mailed to all members of the Gateway Division as it is election time again. For those members who do not receive the RPO on a regular basis, you still can receive communications from the Gateway Division. How? By email...just email me you email address and you will

be place on the list. Not only will you receive meeting notices, but also publications from other Divisions in the Region as they come to the Superintendent. A great way to learn more and improve you modeling skills.

I am sad to report that Craig Brown, a fellow Gateway Division member, recently passed away. Craig was an avid model railroader and a past Gateway Division Superintendent and NMRA President. At the 2007 NMRA National Convention, Craig was awarded the Distinguished Service Award, presented for service to the hobby. The St. Louis Area Narrow Gauge group is having a meet on Saturday, October 13, at the United Methodist Church, Manchester and HW 141, an all day affair starting at 9 AM, at which time an informal memorial will be held for Craig. Gateway Division members are invited to attend.

As mentioned earlier, its time for election of Gateway Division Officers again. This year has gone very fast and it has been very fulfilling and an honor to be the Gateway Division Superintendent.

Because of work and commitments and related travel, I am unable to continue in the Division Superintendent position; however, I will continue to be as active as I can in the Gateway Division.

Accompanying this RPO is a ballot for the election of officers. Hank Kraichely has agreed to run for Superintendent with Tim Stout as the Assistant Superintendent. Dave Lyon and Ron Gawedzinski agreed to continue in their roles as Treasure and Secretary. Please take the time to vote and send in your ballot.

Look forward to see all of you at a future meeting.

Bill Levin
Superintendent
wmlbill@hotmail.com

A Note from the NMRA Member Services Department

The "100% NMRA Club" web pages on the national NMRA website have been completely revised and updated by the program's new coordinator, Chuck Diljak.

The "100% NMRA Club" pages now contain a listing of benefits clubs receive by having everyone as an NMRA member. In addition, the webpage contains a listing of the qualifications clubs need to meet in order to be eligible, and some frequently asked questions about 100% Clubs.

On the page you'll find a link to the "100% NMRA Club" application form, and a link to a listing of all the 100% NMRA Clubs in the country, organized by state. There are even handy links to those clubs' websites.

If your members are in clubs that could use the insurance benefits (and other benefits) of being a 100% NMRA Club, be sure to let them know about the updated web pages.

You'll find the main "100% NMRA Club" web page at:

<http://www.nmra.org/100Club/100Club.html>

If you have any questions about the program, contact Chuck Diljak at the email address found on the page.

Gerry Leone, MMR
Deputy Chair
NMRA Membership Services
& Promotion Dept.

Arthur Craig Brown

I regret to inform you that Craig Brown passed away in early August. He had been fighting colon cancer these past several years. The announcement in the paper suggested donations to the cancer society in his memory.

As most of you probably know, Craig had been a model railroader most of his adult life. Even as kid growing up in Philadelphia he liked to chase trains and prowl the railroad yards. He was a prolific model builder and not just trains. He built military, airplane and ship models and won many awards for his talents. A walk through the back room of his basement was like touring a hobby shop. He loved to explain how he sourced various parts to replicate a particular WW II tank or plane. He served as president of the NMRA, he was a co-founder of the National Narrow Gauge Convention, a charter member of the Friday Night Boomers and was an inductee into the Narrow Gauge Hall of Fame. He's also the guy that did all the mailings for the SLANG meets. Craig was an Air Force veteran serving in Korea and locally at Scott AFB in the communications field. He later worked for, and retired from, IBM.

We shall miss him.

Pete Smith



Mid-Continent Regional Convention / BRANSON EXPRESS 2008
 Hosted by the Ozark Mountain Area
 MAY 15-18, 2008 IN BRANSON, MO
 STONE CASTLE (formerly Settle Inn)

3050 Green Mountain Dr. 800-677-6906 group # NMRA-5158 rate \$69.98 +tax

Activities planned for this year's meet include:

Door Prizes and Silent Auction - for all registrants.

Display Layout and Layout Tours - In addition to the display layout at the meet, several local modelers will be opening their homes to layout tours Friday afternoon and evening. Layout tour maps will be available at registration.

Excursion train trip - On the Branson Scenic Railway. Information will be available at registration.

Model & Photo Contests - by NMRA judging and Poplar vote.

Clinics - a full slate of clinics covering many aspects of the hobby. For Clinic registration contact Tom McMorran at k_t_mack@yahoo.com or 417-239-2776.

Swap Tables and Railroad Groups - Approximately 75 tables for area dealers, local hobbyists and other railroad groups. For information on tables contact Tom McMorran at k_t_mack@yahoo.com or 417-239-2776.

BRANSON, MO - Live entertainment capitol of the U.S.A., with over 52 show venues. Plus Silver Dollar City, Celebration City, Branson Belle and three lakes for boating and fishing. There is something for every member of the family to do in Branson, so make the trip to the convention be a family vacation. For information log onto explorebranson.com or call 800-214-3661.

Mid Continent Regional Convention / Branson Express 2008 Registration Form			
Advance Registration (until October 31,2007) is: \$55.00 for the convention & banquet Full Registration (after October) is \$45.00 for the convention and/or \$25.00 for the banquet Swap tables @ \$20.00, plus \$15.00 Branson City Vendor License fee (March 31,2008)			
		Number of attendees / tables	x Cost = total
Advance Registration (before 10/31/08)			\$55.00
Convention Registration			\$45.00
Banquet			\$25.00
Swap Tables (maximum of five)			\$20.00
Branson Vendors License	1		\$15.00
Total Enclosed:			
Name _____ e-mail _____			
Address _____ phone _____			
City _____ State _____ Zip code _____			
Additional attendees _____			
Make Checks Payable to: "Branson Express 2008" Mail to: Tom McMorran, 730 Emerald Pointe Dr #433, Hollister, MO 65672			

FALL MEET

GATEWAY DIVISION, Mid-Continent Region
National Model Railroad Association



Saturday, November 3, 2007
9 am - 3 pm

Trinity Lutheran Church, 14088 Clayton Road,
at Woods Mill Road (Hwy 141),
Ballwin, MO (west St. Louis County)

**WIN A PORTABLE HO LAYOUT COMPLETE WITH LOCO,
CARS, STRUCTURES, SCENERY, & DETAILS**

Photo & Model Contests

(popular vote; NMRA judging on request)

Clinics

Door Prizes

Swap Tables

Display Layouts

Layout Tours will begin at 4:00PM

Admission: \$5 (children 12 and under: free)

Information: Hank Kraichely (636) 394-5151 or
email: hkraichely@sbcglobal.net

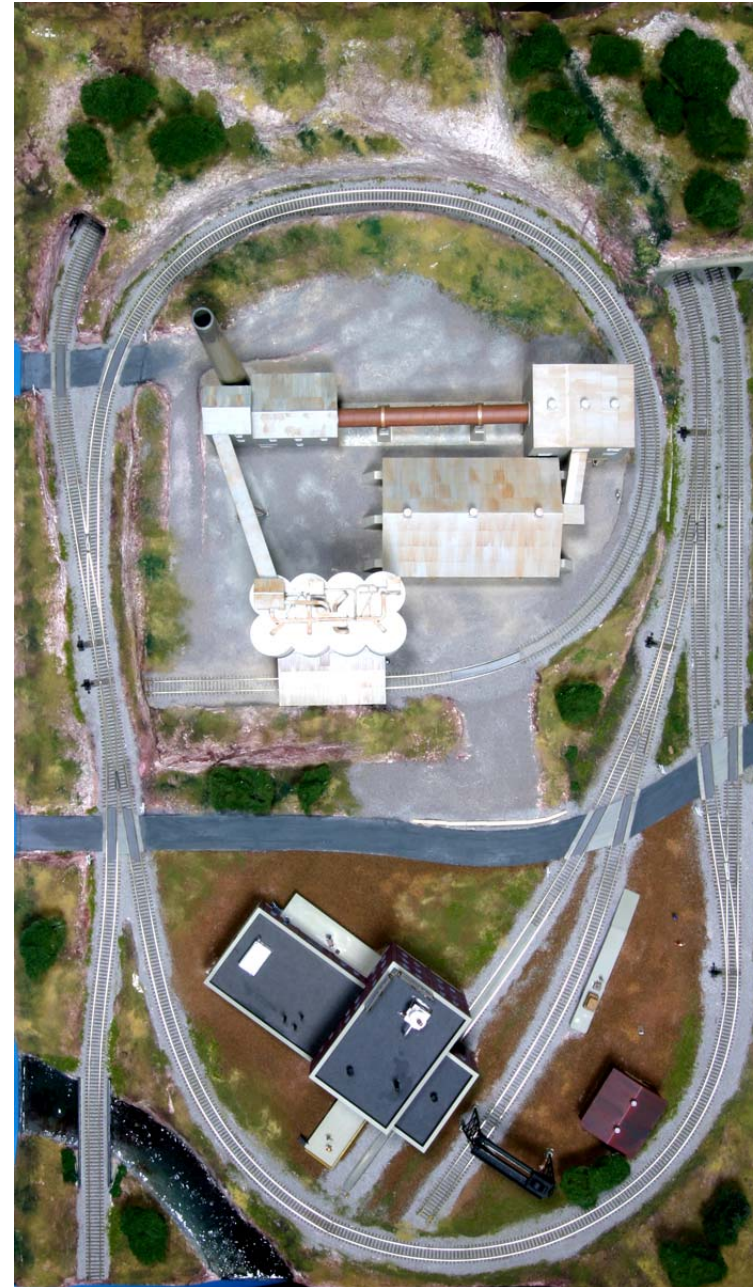
Visit the Gateway Division website:

www://gatewaynmra.org

Gateway Central XIV Project Layout

Photos by Dale DeWitt & Rich Schumacher

Text by Mike Thomas



The Gateway Division's annual "build it, show it, give it away" project is now in its fourteenth edition. This version of the Gateway Central is HO scale, 4'-0" wide by 6'-10" long, and fits in the back of a minivan.

Bob Boedges took charge of the Gateway Central project again this year, with Mike Satke building most of the structures. Don Gathright, Dick Wegner, Dave Roeder, Ron Gawedzinski, Dave Lyon, and Tom Bousman built trees and scenery, painted figures, paved the roads, and detailed the scenes.

The GCXIV has been shown at area train shows, including the Great Train Show and the Boeing swap meet, and

in a new effort to spread the word about model railroading more widely, it has been displayed at area shopping malls,



such as Chesterfield Mall and West County Mall, as well. The project layout always catches children's attention at

train shows, but of course those are kids whose parents are already interested enough in trains to attend the shows. At the malls, kids who might not otherwise see a model train in action get the chance.



The layout stands up amazingly well to being loaded into and out of vans, carried through malls, and being poked and prodded a certain amount by delighted viewers.

The track plan is the inevitable oval, with a passing siding, industry tracks, and a branch that could be used to lead to future expansion.

The largest industry on the layout is a Walthers Cornerstone Series 'Valley Cement' plant, with process buildings, rotary kiln, storage silos, covered loading, conveyors, and smoke stack.



The stack and conveyor add a strong vertical element not often seen in small portable layouts. The heart of a cement plant is the rotary kiln, an enormous, rotating steel pipe in which crushed limestone is sintered to form cement.



The elaborate cement distribution system at the top of the storage silos is especially well modeled.



Mike Satke reconfigured various elements of the kit to fit the available space. Added details include numerous trucks, figures, and a great job of weathering the extensive corrugated iron siding and roofing.



The other large industry on the layout is the factory of 'Wil B. Krummie Custom Cabinets' – as you might guess from the name, this is another Mike Satke creation, this time an extensive kit-bash of Walthers brick factory buildings. Bob Boedges scratch-built the rear loading dock to better fill the space between the building and the mainline.



The other siding in this corner of the layout is the team track. The dock, office, and even the overhead crane were all put together out of Boedges' scrap box.



Tim Stout and Dick Wegner were among the members who staffed the layout and information table at the mall, while Lee Durham and Tom Bousman did much of the hauling of the layout to and from the train shows and malls.



Atlas Model Railroad Company was especially generous in donating the necessary supplies and equipment for this Gateway Central layout. Not only did Atlas donate all the track and turnouts, they provided the power pack, a Quantum Engineer sound and accessory control system, and a sound-equipped locomotive. If there's anything that thrilled the kids even more than seeing

the trains run, it was pushing the buttons to blow the horn and ring the bell! Additional scenic materials, rolling stock, figures, vehicles, tunnel portals, retaining walls, cross-bucks, pallets, boxes, barrels, crates, and other details were donated by members Hank Kraichely, Jim Anderson, Dick Wegner, Gregor Moe, and Rich Laux – and probably others whose names didn't get written down.



Thanks to Richard Schumacher, who set the layout up and took 'posed' photos, and to Dale DeWitt, who caught the looks on kids' faces at Chesterfield Mall.



The drawing of the winning raffle ticket will be at the Gateway Division's Fall Meet, on Saturday, November 3, at Trinity Lutheran Church. This will be your last chance to see the Gateway Central XIV before it's delivered to the lucky winners.

Each year's Gateway Central provides our best opportunity to reach out to the general public, who might not otherwise have any exposure to model railroading. It is also a modest fundraiser, and can be a lot of fun and accomplishment for those who help build it – what other layout have you ever seen built from start to finish in a matter of weeks? Of course, it's also takes a lot of time, effort, and dedication on the part of Division members.



The cabinet factory siding runs right through the building to provide weather-protected unloading of wood and other raw materials.

The Gateway Central is the prize in the Division's annual raffle. Proceeds from ticket sales cover the cost of supplies not donated, with the excess used to pay for Division operations, such as printing and mailing of the RPO.



The bright colors of modern railroad rolling stock (especially that Santa Fe Kodachrome paint scheme) catch the eye, and highly detailed, individual scenes hold viewers' interest.



Mid-Continent Region Convention Review

By: Dave Roeder MMR

Don Morice and I attended the Regional Convention in Lenexa, Kansas August 4. We arrived in the area Friday afternoon and visited 3 hobby shops.

Saturday morning we went over to the convention center to pick up our registration and tour maps. The Turkey Creek Division asked all attendees to bring models to the contest. A popular vote contest was held on the Divisional level to attract those who don't like to fill out forms. Apparently contest modelers are becoming rare. There were 45 entries at the National Convention in Detroit. At Lenexa there were about 90 or more.

I went to Lenexa with 23 models to enter in the contest. The contest registration was done in a very efficient manner. There were 4 people taking care of the paperwork. Each person handled two or three classes of entries. At one point there were three people working on my entries.

Don spent the time over at the swap meet and found a sound equipped IC 2-10-2 steam locomotive.

We left the building and went to have a late breakfast. We were not able to attend any clinics due to our tight schedule. The business meeting and awards presentation lasted until late afternoon. The tours were organized so that you could see 12 layouts if you did not spend a lot of time at each. After reviewing the maps and photos of the layouts, we decided to see if we could visit all 12. If you followed the maps, the layouts were all in line with little or no backtracking. It was a simple matter to follow along and reach each destination in a minimum amount of time. The longest drive time

was 24 minutes and 2 others were 19 minutes. We would arrive, then go down to see what was there. We stayed for only a minute or two if it was not something we were interested in.

The instructions were arranged in two groups of 6. The first group was open from 4 to 7 pm. The second group was from 6 to 9 pm. This is a very clever way to set up tours. The advantage is for the layout owners who can host a tour, then after the session closes, they can go visit up to 6 other layouts. It also works well for the people touring. We were able to visit 11 layouts. The only one we did not see was the second to last layout. When we arrived at about 8:45 pm, the house was dark and there was no sign of activity. The last layout was Steven Priest HO and it turned out to be one of the top four in our estimation. The others at the top of our list were Ron Morse HO, HOn 30 – Chuck Hitchcock HO – Douglas Taylor HO, HOn3.

It is always educational to visit layouts and to see what others are doing. Almost all were in finished basements with good lighting and access. We noticed a lot of the CTC-80 controls. This was the last system before DCC. CTC-80 requires a receiver in each locomotive and runs on DC current. I later learned it was designed and manufactured in the Kansas City area. Another common sight was the evidence of operation sessions. At several places I asked how often they ran and how many operators it took. Most operated monthly and took at least 10 people. The dispatcher was always in a separate room or nook.

I received 2 Divisional and 3 Regional trophies Saturday afternoon. At the business meeting the 2008 Regional Convention was announced. It will be held as a 2 day event at Branson, Missouri in May. Log on to the NMRA website for details.

Upcoming Events

Gary's Switching List

Compiled by Gary Hemmingway for the Mid-Continent Region NMRA

The Switching List contains all known Mid-Continent Region, NMRA, train shows and Division meetings. It also lists all known club shows and swap meets in the Mid-Continent Region (IA, IL, MO, AR, NE, KS, OK). To list your event, send it to: email garyonho@cox.net, or Gary Hemmingway, 3201 SW Stone Ave., Topeka, KS 66614. To subscribe, or unsubscribe, to The Switching List send an email to the above link. Look for us on the MCoR web site: www.mcor-nmra.org.

TRAIN SHOWS & MEETS

NOV 3, 2007, KATE SHELLEY DIV, MCoR, NMRA, 16TH ANNUAL FALL MEET, United Community School, US Highway 30, between Ames & Boone, IA; 9 am – 3 pm, Adm: \$5.00 at door, Pre-registration \$4.00, clinics, silent auction, dealers, displays, layouts, door prizes, contest categories: diesel locomotives, coal hoppers, freight cars prior to 1960, box cars 50' or more, online structures, train-8 pieces; photo contest: structures, color/black & white, prototype & model; Info: Bob Folkmann 515-232-8689, Carl Chumos 515-233-8256.

NOV 3, 2007, GATEWAY DIV, MCoR, NMRA, ANNUAL FALL MEET, Trinity Lutheran Church 14088 Clayton Road at Woods Mill(Hwy 141), train show, operating layouts, clinics, door prizes, and self guided layout tours, Bob Boedges(rboedges@charter.com and 314-631-5371) is the Fall Meet Chairman. Brian Post (314-894-1154) is in charge of arranging tables for dealers at the train show segment.

NOV 17, 2007 – OZARK MODEL RAILROADERS ASSOCIATION 20TH ANNUAL TRAIN SHOW & SWAP MEET, King's Way United Methodist Church, 2401 S. Lone Pine, Springfield, MO; 9:00 a.m. – 3:00 p.m.; Adm: Adults \$5.00, age 7-12 \$3.00, 7 & Under Free w/pd adult, 8 foot tables \$20.00; Setup Friday from 4 pm – 8 pm only, vendor doors open at 7 am Saturday. Info: Gary Mills: 417-725-1433, GMOzarkTrains@aol.com or Larry Smith: LSmith7264@aol.com or 415-865-6250.

NOV 24, 2007 – JOPLIN MUSEUM COMPLEX TRAIN SHOW & SWAP MEET, Joplin Museum Complex is located at 7th and Schifferdecker Streets in Schifferdecker Park between the golf course and swimming pool. Admission is \$3 adult children 12 and under free. All proceeds at the door go to benefit the Joplin Museum Complex; operating HO, N and G gauge layouts and over 60 tables of items for sale and trade. For more information contact Rick Gardner at 417-673-4888 or email rickgardner@sofnet.com. Visit us on the web at www.tristatemodelrailroaders.com.

NOV 25, 2007 - MID- AMERICA TRAIN & TOY SHOW (formerly "Mid-America Train Meet"), BTC Exhibit Hall, I-435 and Front Street, Kansas City MO, 9am –2pm, Adm: \$5 adults, 12 & under, free, 7am early bird adm, \$10 ea. Trains, models, RR collectibles, toys, train movies, door prizes, operating layouts. Free parking. Info: Steve & Sherri Stich, P.O. Box 369, Leavenworth, KS 66048 or 913-651-5864. Directions: From I-435, exit 57 west (Front St) to Universal Ave. and turn right at stoplight. Or, from I-35, exit Front St. and continue east to Universal Ave., then turn left at stoplight.

JAN 26, 2008 – THE GREAT TRI-STATE RAIL SALE, Copeland Park, La Crosse, WI, info: Mark Hamre 608-784-0036 or Phil Lamke 608-582-4761 or email pdlamke@juno.com, or write to The 4000 Foundation, Limited, P. O. Box 3411, La Crosse, WI 54602-3411.

JAN 26-27, 2008 - TRAIN AND CIRCUS SHOW, Cisco, IL, I-72 Exit 156 between Decatur, IL, and Champaign, IL; 10:00 - 4:00 both days, breakfast and lunch available, 65 Vendor Tables, 5 Layouts: N, HO, O, and G; Donation \$3.00, trains@ciscojunction.com
<http://www.ciscojunction.com>.

February 9, 2008 -- The Dupo Show: 18th Year, Sponsored by Reynolds Railways & Dupo Community High School, Dupo High Gym, 600 Admiral Trost Drive, Dupo, IL (I-255 to Exit 9; 7 minutes from the Arch in Downtown St. Louis, MO; hotel accommodations 7 to 10 minutes away in St. Louis South County, Downtown St. Louis, or Waterloo, IL.) 10 am - 3 pm; Adults \$3.00; 12 & under FREE with adult, 40-plus vendors, Lionel, Flyer, HO, N, etc., including operating layouts; Smoke-free environment. 8 ft. tables, \$12 each; tables usually sell out by January 1st; electric \$5.00; payment payable to Reynolds Railways must accompany registration; mail to Reynolds Railways, 212 North Main Street, Dupo, IL 62239; Seller set-up 7 a.m.; ROTC carry-in/our service. Info: 618-286-3399.

FEB 9-10, 2008 -- WICHITA TRAIN SHOW & SWAP MEET, Cessna Activity Center 2744 George Washington Blvd., Wichita, KS, Sat: 9 – 5, Sun: 12 Noon – 4, Sponsored by Chisholm Trail Div. & Engine House Hobbies, Registration; \$6.00 both days. Advance table registration; before 12/ 31/07 take 10%

off. Six foot tables are \$20.00 each, eight foot tables are \$25.00 each. Mail registration to: 603 Chestnut, Halstead, KS. 67056-2302, Email; aylward1@cox.net .

FEB 23, 2008-LAWRENCE MODEL RAILROADERS ANNUAL TRAIN SHOW, Douglas County Fairgrounds, 2120 Harper St., Building 20, Lawrence, KS; for information contact Jim Turner, 255 N. Michigan # 5-25, Lawrence Ks, 66044, 785-841-6256. His email address is jimforegolf@hotmail.com, more information in the future.

MAR 15, 2008 – BOEING EMPLOYEES RAILROAD CLUB-ST. LOUIS RAILROAD SWAP MEET, Greensfelder Recreation Complex at Queeny Park, 550 Wiedman Rd., St. Louis, MO, 10a.m. – 3 p.m., Adm: \$3.00 children under 12 free with paid adult, Tables (30" x 96") \$15.00 each, payment must accompany registration, seller setup 8 a.m., Info: call Wayne Schimmel after 6 p.m. Central Time, 636-668-6313 or 733 Hwy Y, Winfield, MO 63389-2206, wwhtehrse@aol.com, make checks payable to Boeing Employees' Railroad Club-St. Louis.

MAY 15-18, 2008 – MID-CONTINENT REGION CONVENTION, Settle Inn & Resort, Branson, MO, Advanced Registration \$55.00 and closes Sep 30, 2007 includes registration, banquet; after 9-30-07: registration \$40, banquet \$25; Hotel rate 69.98 per night, Ph 1-800-677-6906 and refer to Group Number NMRA-5158; Info: Jim Dimatteo, Convention Chair, 190 Western Ave., Branson, MO

JUL 23 – 26, 2008 – UNION PACIFIC HISTORICAL SOCIETY CONVENTION, Capital Plaza Hotel & Maner Conference Center, Topeka, KS, Info: Larry Tiffany

ltiffany@cox.net, 2140 NW 53rd Terr., Topeka, KS 66618

Division Directors, Train Show Chairs, or Club Show Chairs: ANY MORE EVENTS IN 2007 or 2008? Get your information to Gary at any of the above addresses. Let's get the word out about your next event! The Switching List is a service of Mid-Continent Region, NMRA.

Gateway Division Clinicians Wanted

We always need clinics for upcoming meetings. If you know something other people don't then you're qualified to conduct a clinic. And if you don't think you can fill an hour, we can pair you up with another short clinic for the evening. We especially need more hands-on how-to modeling workshops and more in-depth prototype clinics.

Call Hank Kraichely at 636-394-5151 or email at hkraichely@sbcglobal.net

Division Minutes

Recorded by Ron Gawedzinski, Clerk

Gateway Division Meeting Minutes for July 16, 2007

Clinic: Superintendent Bill Levin called the meeting to order at 7:03 PM. Bill introduced Brian Post and himself as the clinicians, the topic was programming Decoders using the Computer, specifically the "JMRI" software. Bill explained the computer portion of the clinic while Brian explained the decoder information. Bill mentioned all the hardware necessary to have the Decoder talk to the computer before beginning the software information. The website for the software must be downloaded from the internet. The website is : <http://jmri.sourceforge.net>. JMRI is a not-for-profit organization of guys who are interested in computers and model trains. Bill used a "live" computer connection for his demonstration. JMRI can be used to record and install all decoder settings and make program

changes easier. Brian gave information on several different decoders and their good and bad points. Brian suggested that if you only have one or two decoders to program it may be faster to simply use the throttle to program the decoders.

Bill tried to assure us that using JMRI is not as complicated as it seemed. Big thanks to Bill and Brian for this timely and informative clinic.

Business Meeting

Visitors:

We had a single visitor Mr. Frank Karr, who was welcomed with a round of applause.

Minutes of the June 18, 2007 Meeting:

Copies of the June 18, 2007 meeting were distributed. The minutes were accepted as presented.

Treasurer's Report:

Dave Lyon, treasurer, distributed printed copies of the Treasurer's Report for the period June 18 through July 15, 2007. The balance in all funds as of July 15, 2007 was \$26,431.01. There were no questions and the report was accepted as presented.

Monthly Meeting Clinician Report:

Hank Kraichely reported the August meeting will have a clinic and someone to present the clinic, but as of this date the topic was not known. The September meeting will have a shorten format and Hank will give a brief overview of his layout, followed by everyone being invited to his home for an operating session. Members who volunteer to present clinics are always needed and are welcome.

Gateway Layout Tour Schedule:

Hank Kraichely reported that the next layout tour will be held in September after Labor Day. The tour will be in the St. Charles area. Hank will firm up the information and dates and will send an E-mail to all members. Driving instruction will be included in the E-mail.

Merchandise Report:

Tim Stout reported that there are still some 33" and 36" HO wheel sets available as well as N wheel sets and Hon3 sets. He also reported that there are 15 HO loading dock kits from Blair Lines available and only 1 N scale kit remaining. The kits are \$15.00 and the wheel set are \$6.00 for a package of 12.

Director's Report:

Jim Anderson reported that the Mid-Continent Regional Annual Convention will be held in Lenexa, Kansas on August 3rd and 4th 2007. Registration is \$4.00. Jim also reported that the 2008 Mid-Continent convention may be held in the Branson, MO area.

A.P. Report:

Don Taschner reported that there has been no activity from anyone completing an A.P. project.

Announcements:

The Boeing Train Show will be held on September 8th and they asked if we are going to participate with our project layout. Brian will investigate and try to determine where our layout would be located.

There will be a fund raising event at the Marion, Ohio Train Station in September.

Dave Lyon has information about train items for sale from a woman whose husband has passed away. Contact Dave for further information.

Jim Anderson has information about someone who is moving and has (2) HO 4' x 8' layouts for sale. The layouts can be purchased as is or various items can be purchased separately.

John Hardy presented information on a continuing layout being built in a Nursing Home and wanted to thank all those who have provided free items for the layout. Progress is being made and obstacles are being overcome. The residents all are pleased with the layout.

Project Layout XIV:

Bill Levin said that in the coming months we are going to take the Project Layout to some Shopping Malls. Volunteers will be needed to help transport and man the layout. The date and locations are not firmed up yet. Conflicts with Train Shows still have to be resolved. The current plan is to use the Mid-Rivers, West County and Chesterfield Malls. The times for the layout to be operated in the Mall are up to our discretion, but most likely will begin at 10:30 AM. Bill will use E-mail to give additional information as it becomes available.

Old Business:

Volunteer Survey Lists: Bill asked those who have volunteered to take the survey of members to try and finish the surveys as soon as possible so the information can be utilized.

Donated N Scale Layout: Bill Levin reported that Brad Joseph, will donate the money to the Gateway division to purchase any materials and supplies to complete the layout. Don Ayres has volunteered to do the work necessary to complete the layout. The layout will be operated in Brad Joseph's Show Room during the Christmas Holidays. When the layout is removed Brad will raffle it off. The raffle tickets will be free.

New Business:

The Mississippi Valley N Scale train Show will be held in October. Brian will investigate the possibility of the Gateway Division's participation.

Don Taschner reported that the Traveling Award Plaques have no more room to add additional names tags for honorees. Don did investigate and find that larger plaque boards are available and could be purchased allowing for more names to be added. Don was asked to determine if the companies or persons in whose name the award was given were still in business or wanted the award to continue.

50/50:

There was \$28.00 collected for the 50/50 drawing and Jerry Smith won \$14.00 in the drawing.

Adjournment:

A member moved to adjourn the meeting, seconded and approved at 8:50 PM.

The next meeting is August 20, 2007, 7:00 PM, VFW Hall, 221 West 1st Street, O'Fallon, IL.

Respectfully Submitted,

Dave Bartz Acting Clerk

Gateway Division Meeting Minutes for August 20, 2007

BUSINESS MEETING

Superintendent Bill Levin called the business meeting to order at 7:01 pm. There were 18 members and one guest present.

Visitors:

We had a single visitor, who was welcomed.

Minutes of the July 16, 2007 Meeting:

Copies of the minutes of the July 16, 2007, meeting were distributed. It was stated, under

Merchandise Report, the cost of the Blair Lines kits are \$5.00 each, not \$15.00. The minutes were accepted as amended.

Treasurer's Report:

David Lyon, Treasurer, distributed printed copies of the Treasurer's Report for the period July 16 through August 20, 2007. The balance in all funds as of August 20, 2007, was \$26,227.13. There were no questions and the report was accepted as presented.

Monthly Meeting Clinician Report:

Hank Kraichely was not present. Bill Levin said the September meeting would have Hank as the clinician. Hank will give a brief overview of his layout, followed by everyone being invited to his home for an operating session. (Members who volunteer to present clinics are always needed and are welcome. The clinics could be on a prototype RR, your RR, some experiences you have or a modeling project.)

Gateway Layout Tour Schedule:

Hank Kraichely was not present. No report.

Merchandise Report:

Tim Stout was not present. Bill Levin suggested checking his (Bill's) latest Email message for what items are available for sale.

RPO Report:

Bill Levin reported the RPO went out.

Director's Report:

Jim Anderson was not present. No report.

Achievement Program (AP) Awards Report:

Don Taschner reported that there has been no activity from anyone completing an A.P. project.

Announcements:

A member reported about 1,150 people showed up at the recent 2007 NMRA National Convention held in Detroit, Michigan. From all reports, it was a great convention.

Brian Post mentioned that Craig Brown, a fellow Gateway Division member, recently passed away. Craig was a past Division Superintendent and in model railroading for many years. He was also a past President of the NMRA. According to Pete Smith, there will be no memorial service for Craig. However, the St. Louis Area Narrow Gauge group is having a meet on Saturday, October 13, at the United Methodist Church, Manchester and HW 141, an all day affair starting at 9 AM, at which time an informal memorial will be held for Craig. Gateway Division members

are invited to attend. Contact Pete Smith for further details. At the 2007 NMRA National Convention, Craig was awarded the Distinguished Service Award, presented for service to the hobby. Pete will prepare an article about Craig for the next RPO.

Bill Levin mentioned he received an Email from a Cub Scout Troop in South St. Louis County that would like to have a speaker come and talk to their troop and bring some models and talk about the hobby. A member volunteered and Bill said he would follow up with him.

Project Layout XIV (14):

Bill Levin said we have contracted for three Saturdays to be at area Malls. On August 25 we're due at West County Mall, on September 29 at Chesterfield Mall and on October 20 at Mid-Rivers Mall. We're trying this to see if we can attract new members as well as sell raffle tickets on the layout. Anyone who would be willing to help this Saturday please talk to Bill after the meeting. We're going to need a van to haul the layout this Saturday so we need a volunteer. We'll also need to move the boxes containing blank raffle slips, banners, raffle slip entry box, cash box and literature. Our location at West County Mall is between Chico's Restaurant and the Discovery Network Store, at the Macy's end. Set-up should be at 9:30 AM and take down at 3 PM. If this goes well we'll consider expanding it next year at other Malls.

Old Business:

Volunteer Survey Lists: Bill stated we need to follow up and finish the survey by next month.

Donated N Scale Layout: Ron Kraus gave an update on the layout. The consensus of Ron, Don Ayres and Brad Joseph is the layout is too complicated for an amateur to run and it was in rough shape. It was decided to take the layout apart. So far they have been able to salvage quite a bit off of it. They will prepare an inventory list as soon as possible. Bill Levin said we could use the items for a future project layout.

New Business:

None.

50/50:

There was \$24.00 collected for the 50/50 drawing and Mike Satke won \$12.00 in the drawing.

Adjournment:

A member moved to adjourn the meeting, seconded by another member and approved.

The next meeting is September 17, 2007, 7:00 PM, Trinity Lutheran Church, Ballwin, Missouri.

Clinic: Bill Levin reminded members that the clinic presentation tonight is at Ralph Miller's home. Ralph will talk about scenery techniques on water and structures, showing the special techniques he used and the results he achieved on his well done Midwest and Northern RR. Maps to his home are provided after the meeting.

Respectfully Submitted,

Bob Boedges, Acting Clerk

Gateway Division Meeting Minutes for Sept. 17, 2007

Clinic: Superintendent Bill Levin called the meeting to order at 7:06 PM. Bill introduced Hank Kraichely to explain his CB&Q layout and the open house that he was to host after the business meeting was concluded. The membership was invited to operate on Hank's layout using the Digitrax system for operating and powering the trains. Both through trains and switching operations can be conducted on the layout. Hank's layout runs north and south from St. Louis to Hannibal and east and west from Old Monroe to Mexico, Missouri. Maps were provided for all who wished to take advantage of Hank's offer.

Business Meeting

Visitors:

Frank Karl was a visitor for the second time, welcome.

Minutes of the August 20, 2007 Meeting

Copies of the August 20, 2007 meeting were distributed. The minutes were accepted as presented.

Treasurer's Report:

Dave Lyon, treasurer, distributed printed copies of the treasurer's report for the period August 21 through September 16, 2007. The balance in all funds as of September 16 was \$26,400.20. Dave reported that the 2 times we have displayed our project layout in shopping malls resulted in a small loss and that the layout to date has a loss

of \$205.38. This loss includes the \$200.00 fee for having the layout at the chesterfield and Mid-Rivers mall in the future.

Monthly Meeting Clinician Report:

Hank Kraichely reported that he has not finalized the clinic for October. The month of November is our annual Christmas party and for December the clinic will be replaced with a swap meet at the Illinois location.

Gateway Layout Tour Schedule:

Hank Kraichely reported that he is still trying to put together the layout tour in the St. Charles area. He is still looking for layouts and volunteers.

Merchandise Report:

Tim Stout reported that he has only 1 N scale loading dock and 9 HO scale docks remaining to be sold. He has plenty of wheel sets left.

RPO Report:

Mike Thomas reported that he needs all material for the next RPO to be sent to him by the end of September. This is the RPO that is to be sent to all of the Mid-Continent members and should include information about our Fall Meet. Mike also mentioned that this RPO is also the mailing that includes our membership directory, but that he does not have an updated copy. Bill Levin said he would check with Hank Kraichely to determine if a new directly is available.

Director's Report:

Jim Anderson reported that the Regional Convention was a success but was smaller than normal. The convention had several good clinics, show train store and layout tours.

Jim also reported that the Convention for 2008, will be held in Branson MO. The dates are May 15 thru 18. The cost is \$55.00 if paid by the end of September and \$65.00 after October 1, 2007.

Jim also reported that the region is looking a division to host the convention in 2009.

The NMRA national has not sent the \$2.00 per member to the Region as of this date. The region will keep \$1.00 of the refund and pass the other \$1.00 to each division. It is hoped the national will make that refund in the near future.

It is possible that our division may have to file additional paper work to the IRS to maintain our 501c tax status since the IRS has made a few changes to that tax exempt status.

Achievement Program (AP) Awards Report:

Don Taschner reported that there has been no recent activity or awards given to our members.

Don stated that our Traveling Award Plaques have no more room to add names for anyone being given the award. He also stated that 2 of the companies sponsoring the award are no longer in business. Don suggested that a new award be started and that the Gateway Division be the sponsor. Dick Wegner made a motion to start a traveling plaque for "The Best of Show" and that the Gateway division be the sponsor. The motion was seconded and approved.

Announcements:

Bill Birdsell reported that he brought in various Model Railroader magazines that were donated to the National Railroad Historical Society, and that they are free for anyone to take home from the meeting.

Rich Velten mentioned that there will be an open house in Kirkwood sponsored by their HO club between 7 :00 and 9:00 PM on September 27.

Tim Stout mentioned a model railroad open house to be held in Litchfield on Friday evening November 23 from 5:00 to 9:00 PM. Tim had flyers with directions for those who are interested.

Project Layout:

Bill Levin reported that he has learned from the previous to showings of the layout at malls that location is very important. Therefore the location of the layout in the upcoming Malls will be closer to the main traffic areas. Also the times will be adjusted to have the layout shown until 5:00 PM.

The layout schedule is:

Chesterfield Mall Saturday, Sept. 29th
10 AM until 5:00 PM

Kirkwood Community Center
Mississippi Valley N Scalers Saturday Oct. 14
10 Am to 5:00 PM and Sunday

Oct. 14th from 10:00 AM to 5:00 PM.

Mid-Rivers Mall Saturday Oct, 29th
from 10:00 AM to 5:00 PM

Layout staffing is need for all of those dates. Please see Bill Levin to volunteer.

Fall Meet:

Bob Boedges reported that plans for the Fall Meet are well underway. The space at Trinity Lutheran Church will be expanded to allow for more layouts and vendor tables. At the present

there are only 13 tables remaining to be sold and Brian Post reports they will all be sold quickly.

The clinicians are set and are Dave Roeder, scenery backdrops made on computers; John Schindler, larger layout operation; Gary Gross, small layout construction and operation; and Don Gathright, electric interurban operation.

Bob has not started on the attendance prizes, has the list from last years contributors. Don Taschner will again be in charge of the Model contest room and the judging of the items that were entered. Hank Kraichely will provide the home layout tour schedule.

Dale Bitsch will provide the required information to Boy Scouts so they can earn the Railroad Merit Badge. He needs volunteers to teach the scouts various sections of the requirements for the badge. He will provide merit badge counselors who will test the scouts on their knowledge. Please see Dale and volunteers for this worth while task.

Old business

Bill Levin reminded all those who are completing the member surveys to quickly finish them and turn them in so updates can be made on member information.

The N Scale layout that was donated to our Division has been taken apart and all items that could be salvaged have been saved. A list of the inventory will be available at the October meeting.

Dave Lyon reminded all members to check to insure their membership publication fees are up to date. Please see Dave if you need to give him \$3.00 to continue to receive the RPO.

New Business

Brain Post made a motion to be permitted to produce certificates of Achievement with the Gateway logo for an event he will host in the future for model railroaders under the age of 17. The motion was seconded and approved.

Bill Levin made a motion to allow hobby shops within the bounds of the division to provide exclusive items for sale at a reduced price for all Gateway Division members. Members would have to show current membership cards to be able to take advantage of the sale items. The motion was seconded. Discussions were held about the need to prove membership and to the

added requirement for the hobby shop owners. The motion was passed as presented.

50/50:

There was \$25.00 collected for the 50/50 drawing and was won by Bill Birdsell who received \$12.00.

Adjournment:

A member moved to adjourn the meeting, seconded and approved at 8:20 PM.

There were 27 members present.

The next meeting will be held at the VFW Hall, 221 West 1st Street, O' Fallon IL., at 7:00PM Oct 15, 2007.

Respectfully Submitted,

Dave Bartz Acting Clerk

Gateway Division Director's Report Submitted to the August 2007 MCoR Board of Directors Meeting

I. General Comments

The Division continues to meet on a rotating basis between the VFW Hall in O'Fallon, IL and Trinity Church in Chesterfield, MO. Average monthly attendance is usually in the 30-50 range. Meeting announcements are communicated by post cards to members who are current in their paid subscription fee(\$3/year) or via e-mail to members who prefer this method of communication. Meeting information is also posted on our website which is www.gatewaynmra.org.

II. Division Monthly Meetings/Clinics(January through June 2007)

-January:"Basics of DCC Decoder Installation In Non-DCC Ready Locomotives"(Brian Post)

-February:"Prototype and Modeling Steel Making Operations"(Curt Regensberger)

-March:"Backdrop Painting With Sponges"(Gary Hoover)

-April:"ATSF Super Chief Ride and Visit To John Allen's Home Layout"(Dee Joseph)

-May:"Assemble Blair Line Wood Loading Ramp Kit"-Free Kit To All Meeting Attendees

-June:"Adapting Prototype Yard Operations To Model railroading"(Richard Lake)

III. Fund Raisers

The Gateway Division XIV Project Layout has been exhibited in a few area train shows. The current plan is to exhibit the layout in 2-3 shopping malls beginning in September leading up to the Gateway Division Fall Meet on November 3.

The Division continues to sell attractively priced HO and N scale wheel sets. The Gary Hoover HO scale box car kits have been sold out.

The Gateway Division Fall Meet will be held on Saturday November 3 at Trinity Church. As usual there will be a large number of dealer and individual tables selling merchandise along with operating layouts, clinics, model contests and self guided layout tours.

IV. AP Awards

AP activity within the Gateway Division is quite low. Attention needs to be given to stimulate interest in this area. Randy Meyer did receive his MMR award.

V. Membership Activity

The Division continues to be challenged in terms of retaining members as well as adding new members. The nucleus of membership has essentially remained the same. Going into the end of June, membership info furnished by Rich Napper included the following: 166 CK subscribers, 243 active NMRA members, 420 inactive NMRA members for a total of 663 members in Gateway Division territory. In addition there are 110 Gateway members who are current in their \$3/year subscription fees.

To improve participation in Gateway activities/attendance our Superintendent Bill Levins has recruited volunteers to call all NMRA members in our territory and do a survey to find out what the Division can do to increase interest and participation in Gateway activities.

Another new program is to set up quarterly layout tours on specific weekend dates to visit layouts of Division members. So far 3 sessions have taken place with very satisfactory attendance.

Mike Thomas continues to do a fine job as Editor of our publication the RPO. Mike is always looking for articles for publication. Anyone in MCoR territory is more than welcome to submit articles for publication in the RPO.

The Gateway website continues to attract attention. Stats for June are typical examples:

-Hits for entire site: 1,778,854

-Page views about 2778/day

-Visits about 2141/day

-Search engine referrals: 8923

June is usually a lighter month as data for April and May is larger in all categories.

VI. Officers/Department Chairs For 2007

Superintendent: Bill Levin

Assistant Superintendent: Hank Kraichely

Division Director: Jim Anderson

Clerk (Secretary): Ron Gawedzinski

Paymaster (Treasurer): Dave Lyon

Membership Chairman: Hank Kraichely

AP Chairman: Don Taschner

RPO Editor: Mike Thomas

Gateway Website Manager: Richard Schumacher

Fall Meet Chairman: Bob Boedges

Submitted to the BOD by

Jim Anderson, Gateway Division Director

July 15, 2007

Coming Next Issue

Every issue of the RPO starts out as a file containing the masthead and a whole lot of article headings that read:

Article Title

by somebody

These placeholders gradually get replaced as material is submitted, but not always as rapidly or as completely as we would like.

Your contribution of an announcement, modeling tip, model or prototype photo, product review, or anything else of interest to Gateway Division members will be greatly appreciated.

Short pieces that can be used to fill in a column between longer articles are especially useful, as are one or two photos (with captions) of either prototype or model railroad subjects.

Vertical format photos are always needed for the cover, and are sometimes hard to come by given the horizontal nature of trains.

Officer Elections

Enclosed with this edition of the RPO is your ballot for 2008 officer elections. We thank the outgoing officers for their past service, and hope all members will take this opportunity to vote for next year's officers, whether for those who volunteered to run or for write-in candidates.

The candidates are:

Superintendent: Hank Kraichely

Clerk: Ron Gawedzinski

Assistant Superintendent: Tim Stout

Paymaster: Dave Lyon

NMRA MCoR Region & Gateway Division

The National Model Railroad Association (NMRA) is a world-wide organization dedicated to all aspects of model railroading. In order to bring the most benefit to its members, the association is subdivided into Regions, and each Region has a number of local Divisions. National dues are \$48 per year, and all members of the NMRA are automatically members of the Region and Division in which they live. The Gateway Division is part of the Mid-Continent Region, which represents Missouri, Kansas, Arkansas, Oklahoma, Nebraska, and parts of Iowa and Illinois.

The Mid-Continent Region publishes a quarterly bulletin, The *Caboose Kibitzer*, and holds an annual convention meeting that usually includes modeling clinics, local tours of layouts or prototype facilities, and model contests. Annual subscription to the Mid-Continent Region *Caboose Kibitzer* is \$12 and runs concurrently with membership at the National level.

The Gateway Division is well represented on the regional and national levels of the NMRA. Its members actively promote the modeling hobby through local monthly meetings, this quarterly newsletter, an annual train meet in the fall, participation in area train shows and other events, and a comprehensive website. Annual subscription to the Gateway Division *RPO* is \$3, running from July 1 through June 30. Members who subscribe mid-year are given extended memberships. In addition to the quarterly newsletter, a member directory is published listing names, addresses, and information about individual modeling interests. New members also receive a Division membership pin.

Membership is open to anyone from the beginner to the most advanced modeler, of all ages, so that everyone can share questions and knowledge of the hobby. Visitors are welcome at the monthly Division meetings listed on our website, www.gatewaynmra.org

How to Join

Visit our website, complete the form at <http://gatewaynmra.org/membership.htm>

Division Officers

Superintendent

Bill Levin

Assistant Superintendent

Hank Kraichely

Clerk (Secretary)

Ron Gawedzinski

Paymaster (Treasurer)

Dave Lyon

Division Director

Jim Anderson

